
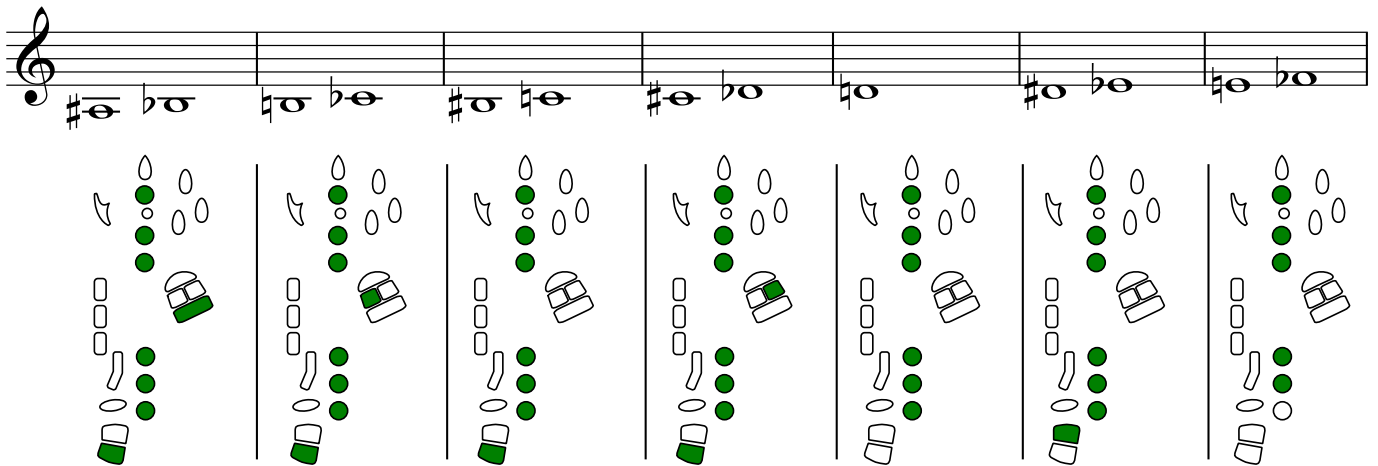
 = painettu näppäin

 = lisävaihtoehto

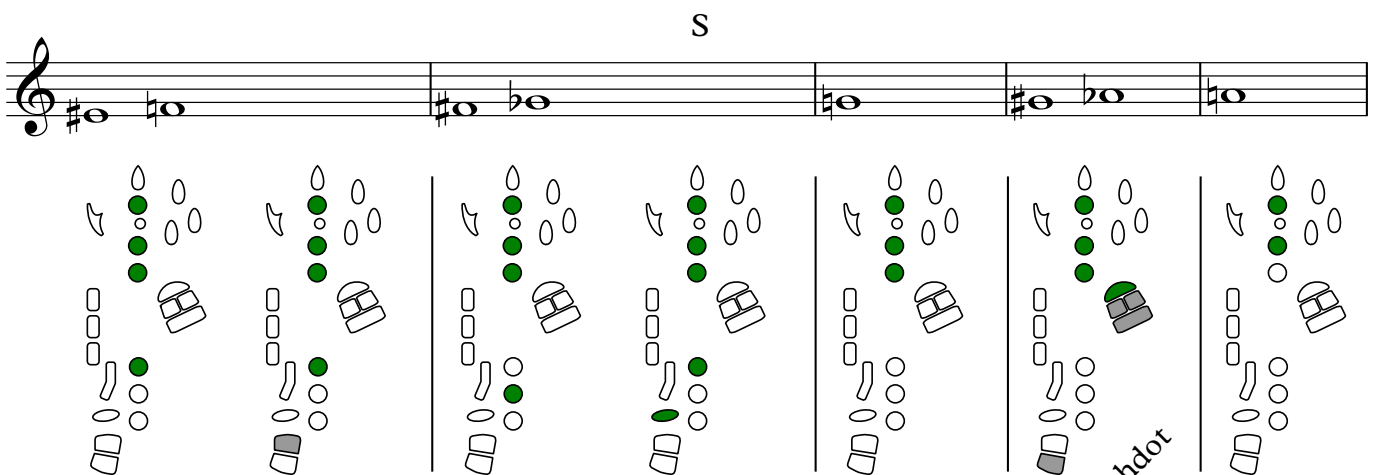
Saksofonien sormituksia

Perussormitukset kaikille saksofoneille

huomioi, että äänillä
 c^1 , d^1 - fis^1 ja d^2 - fis^2
voidaan pitää gis -näppäin
painettuna

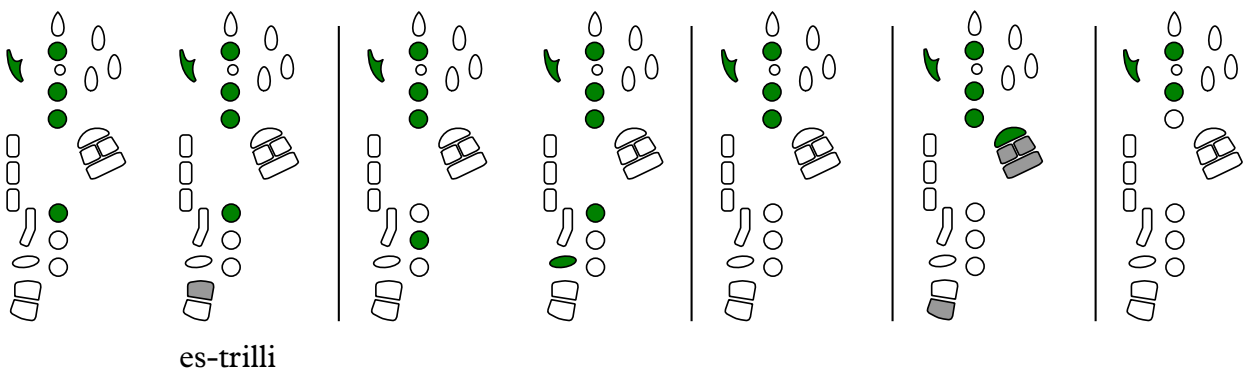
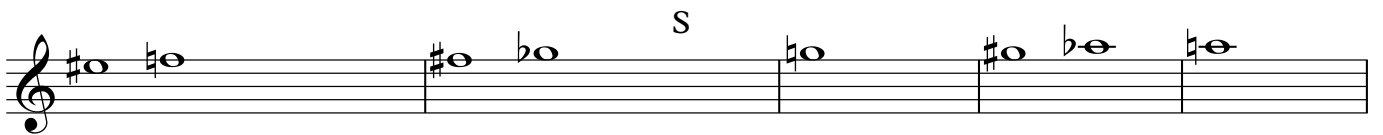
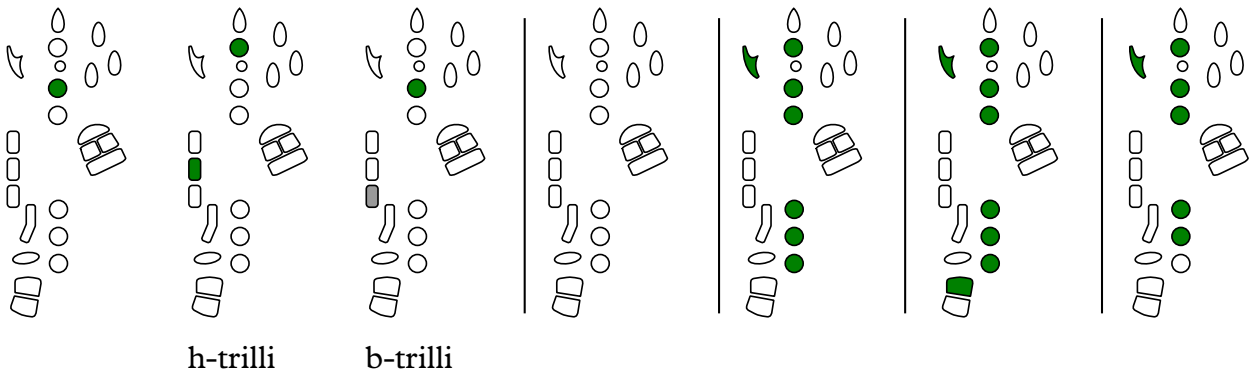
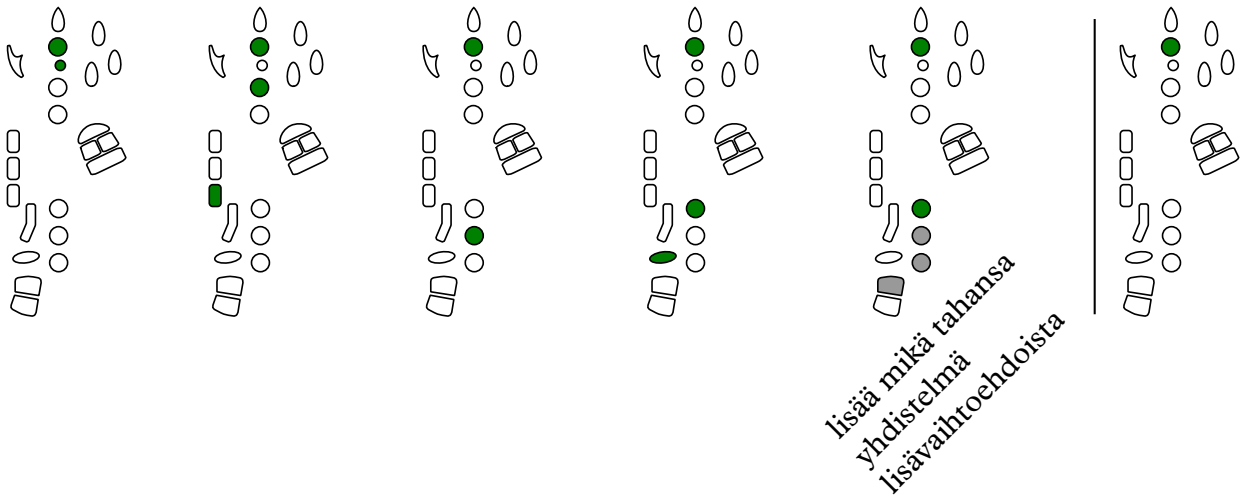
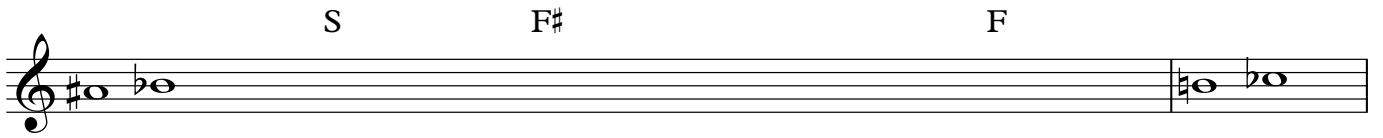


S



es-trilli

*lisävaihtoehdot
aläänille
mentäessä*



♯_e _b _o S F_♯ F _h _o _b _e

Detailed description: This block shows a musical staff with a treble clef and a key signature of one sharp (F#). The notes are S, F#, F, and h o b e. Below the staff are fingerings for each note, represented by numbers 1-5 and dots indicating finger placement. The notes are: S (F#4), F# (F#5), F (F4), and h o b e (F#4, G4, A4, B4).

♯_b _h _e S _♯ _e _b _o _h _o _♯ _b _o _b _e

Detailed description: This block shows a musical staff with a treble clef and a key signature of one flat (Bb). The notes are S, #e b o, h o, and #b o b e. Below the staff are fingerings for each note, including trills. The notes are: S (Bb4), #e b o (Bb5, Bb4, Bb3), h o (Bb4, Bb3), and #b o b e (Bb4, Bb3, Bb2, Bb1).

h-trilli

b-trilli

c-trilli

_h _o _b _e _♯ _e _b _o _♯ _b _o _b _e

Detailed description: This block shows a musical staff with a treble clef and a key signature of one flat (Bb). The notes are h o b e, #e b o, and #b o b e. Below the staff are fingerings for each note. The notes are: h o b e (Bb4, Bb3, Bb2, Bb1), #e b o (Bb5, Bb4, Bb3), and #b o b e (Bb4, Bb3, Bb2, Bb1).

etu-e

etu-f

käytetään altissimo-rekisteriin mentäessä