
 = painettu näppäin

 = lisävaihtoehto

Saksofonien sormituksia

Perussormitukset kaikille saksofoneille

huomioi, että äänillä
 c^1 , d^1-fis^1 ja d^2-fis^2
voidaan pitää gis-näppäin
painettuna

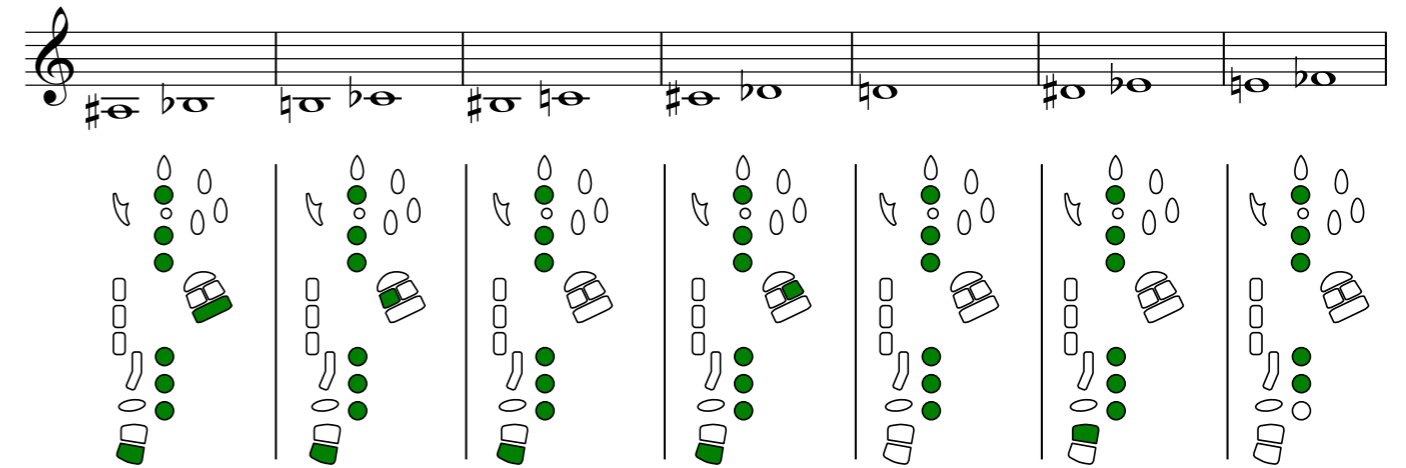


Diagram showing the basic fingering for seven notes on the saxophone. The notes are: c^1 , b^0 , a^0 , g^0 , f^0 , e^0 , and d^0 . Each note is accompanied by a fingering diagram showing the placement of fingers (1-4) and the use of the thumb (T) and index (I) fingers. Green circles indicate the primary fingering, and grey circles indicate alternative fingerings.

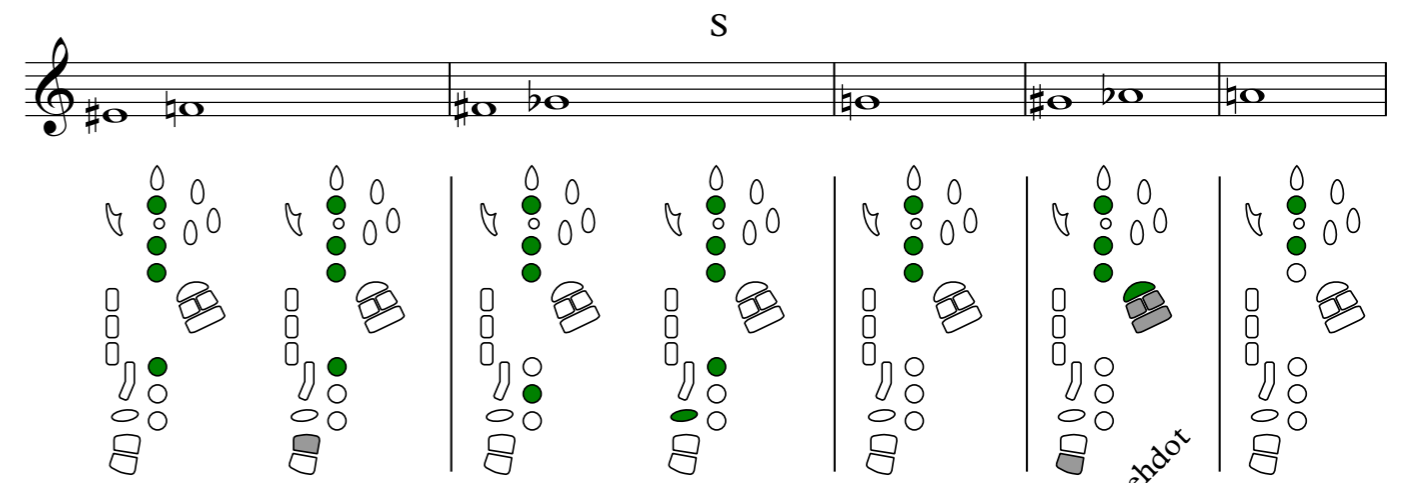
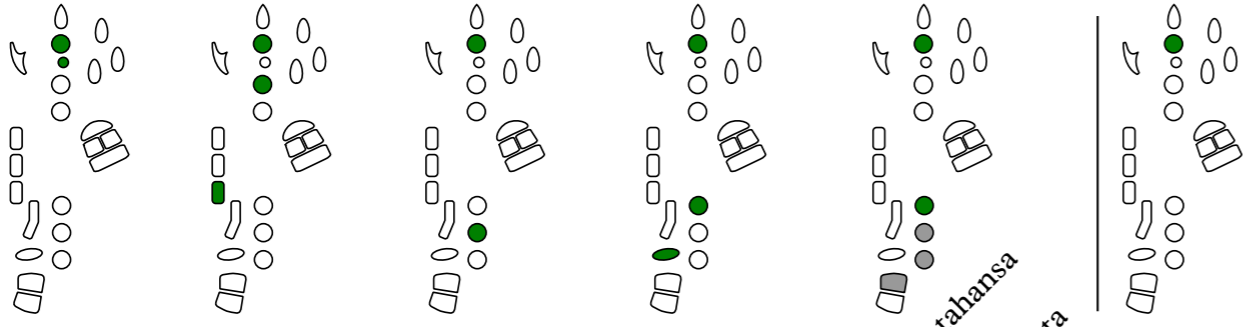
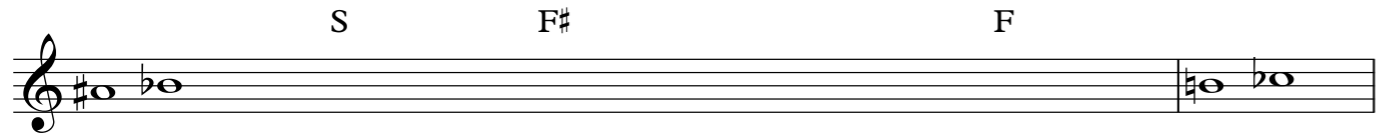


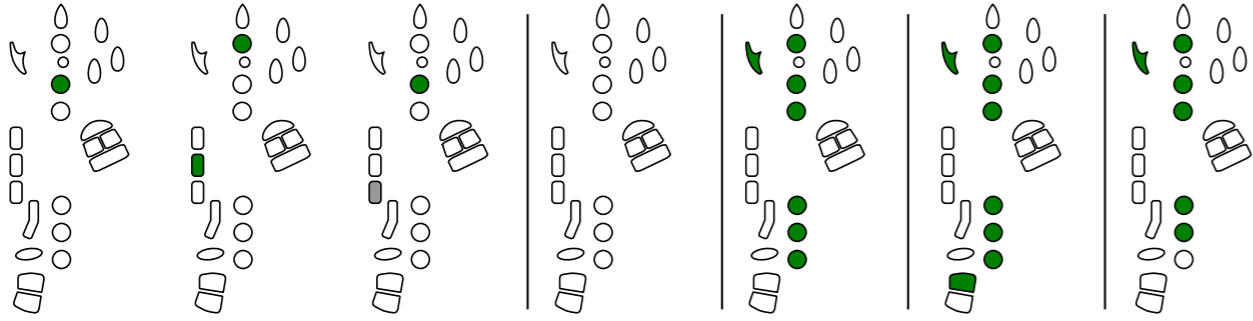
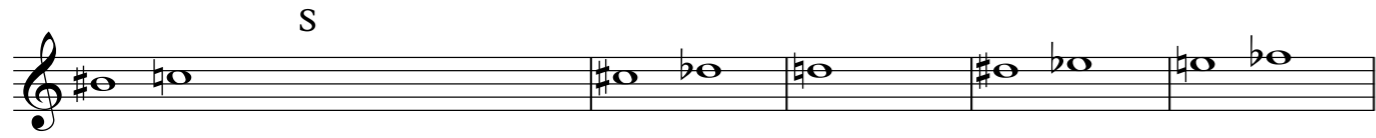
Diagram showing the basic fingering for five notes on the saxophone. The notes are: c^1 , b^0 , a^0 , g^0 , and f^0 . Each note is accompanied by a fingering diagram. A 's' is written above the staff. The diagrams show the placement of fingers (1-4) and the use of the thumb (T) and index (I) fingers. Green circles indicate the primary fingering, and grey circles indicate alternative fingerings.

es-trilli

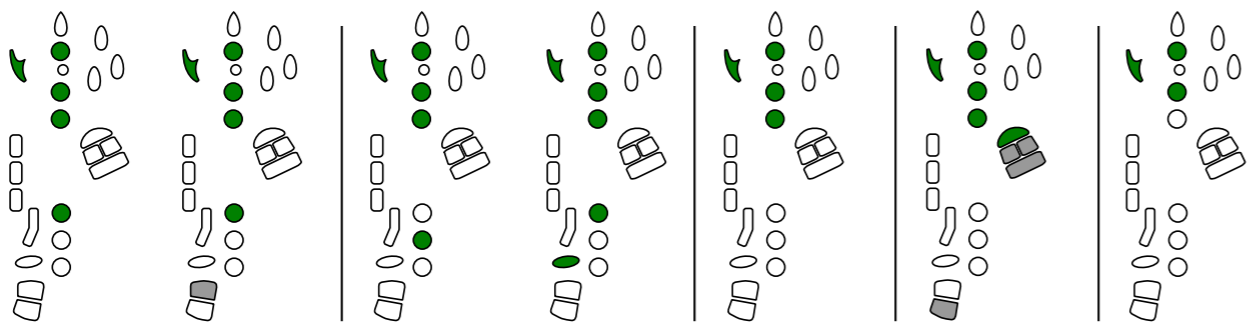
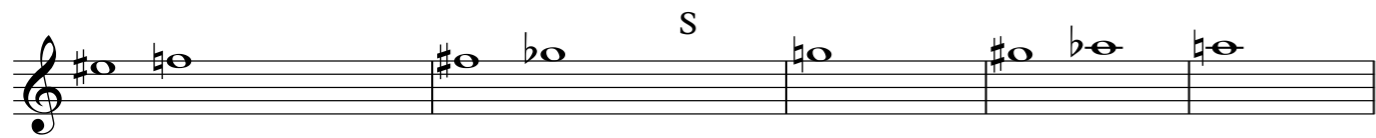
lisävaihtoehdot
aläännille
mentäessä



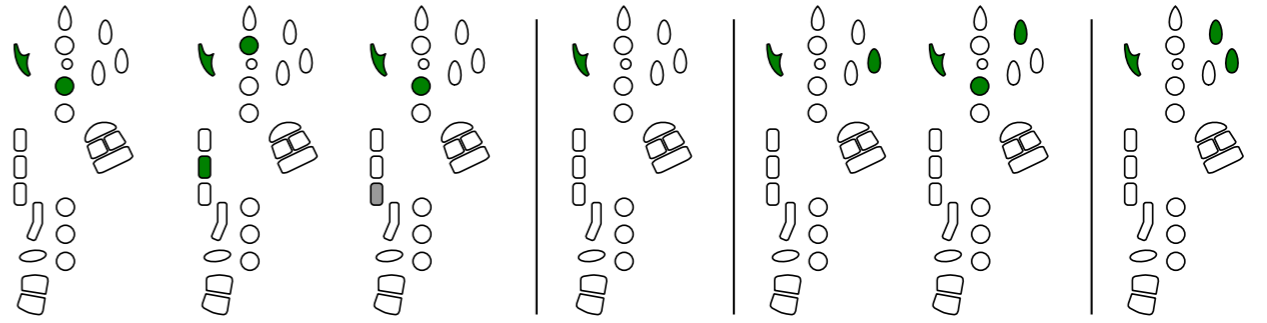
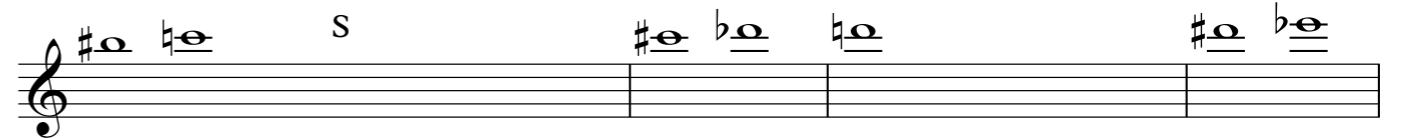
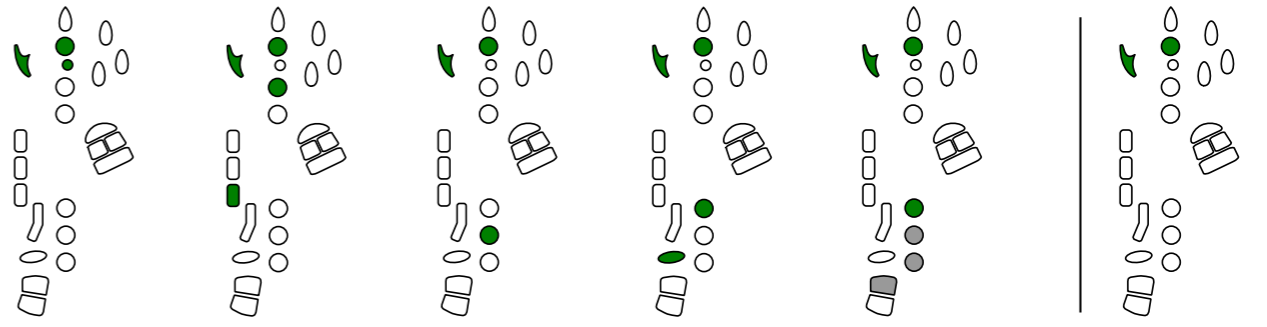
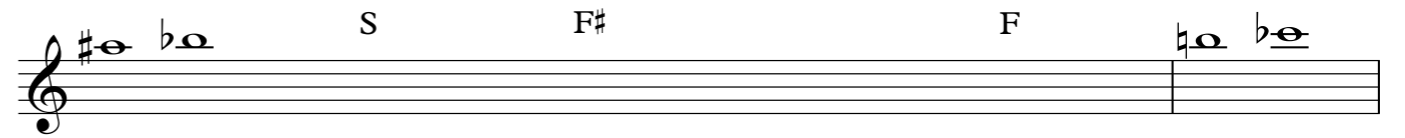
lisää mikä tahansa yhdistelmä lisävaihtoehtoista



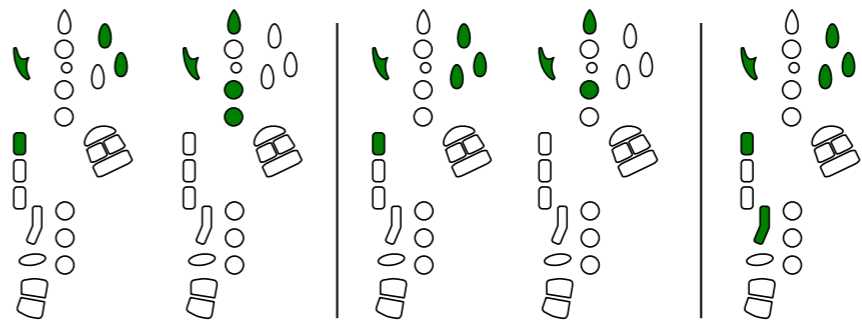
h-trilli b-trilli



es-trilli



h-trilli b-trilli c-trilli



etu-e etu-f

käytetään altissimo-rekisteriin mentäessä