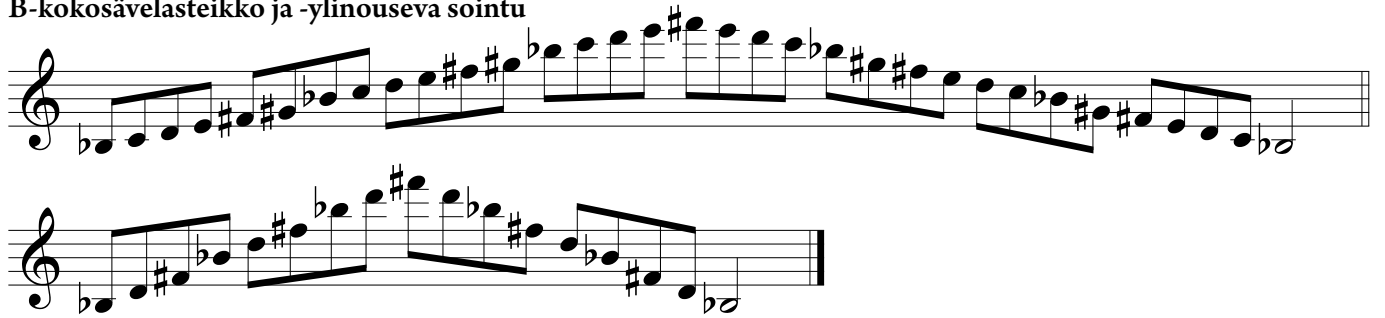


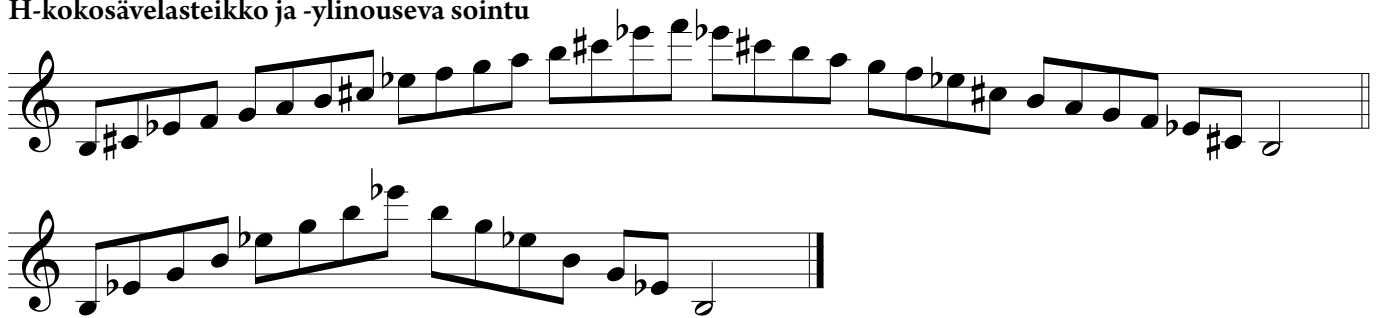
# Liite asteikkovihkoihin

## YLINOUSEVAT SOINNUT

B-kokosävelasteikko ja -ylinouseva sointu



H-kokosävelasteikko ja -ylinouseva sointu



# ENHARMONISET VAIHTOEHDOT

## Ces-duuri

Musical notation for the C major scale (Ces-duuri) in treble clef. The key signature has no sharps or flats. The notation shows two lines: an ascending line and a descending line. The notes are C4, D4, E4, F4, G4, A4, B4, C5, B4, A4, G4, F4, E4, D4, C4. The letter 'S' is placed above the notes C4, G4, and C5 in both lines.

## Des-duuri

Musical notation for the D major scale (Des-duuri) in treble clef. The key signature has two sharps (F# and C#). The notation shows two lines: an ascending line and a descending line. The notes are D4, E4, F#4, G4, A4, B4, C#5, D5, C#5, B4, A4, G4, F#4, E4, D4. The letter 'S' is placed above the notes D4, G4, and D5 in both lines.

## Ges-duuri

Musical notation for the G major scale (Ges-duuri) in treble clef. The key signature has one sharp (F#). The notation shows two lines: an ascending line and a descending line. The notes are G4, A4, B4, C#5, D5, E5, F#5, G5, F#5, E5, D5, C#5, B4, A4, G4. The letter 'S' is placed above the notes G4, C#5, and G5 in both lines.

## ais-molli (harmoninen)

Musical notation for the A minor scale (ais-molli) in treble clef. The key signature has no sharps or flats. The notation shows two lines: an ascending line and a descending line. The notes are A4, B4, C5, D5, E5, F5, G5, A5, G5, F5, E5, D5, C5, B4, A4. The letter 'S' is placed above the notes A4, E5, and A5 in both lines. The letter 'x' is placed below the notes C5 and F5 in both lines.

dis-molli (harmoninen)

Two staves of musical notation in treble clef, key signature of three sharps (F#, C#, G#), and 2/4 time signature. The music consists of eighth and sixteenth notes. The first staff has 'S' markings above the first two notes and the last two notes. The second staff has 'S' markings above the first, third, and fifth notes. There are 'x' marks above several notes in both staves, indicating specific fingerings or techniques.

gis-molli (harmoninen)

Two staves of musical notation in treble clef, key signature of three sharps (F#, C#, G#), and 2/4 time signature. The music consists of eighth and sixteenth notes. The first staff has 'S' markings above the first, third, and fifth notes. The second staff has 'S' markings above the first and third notes. There are 'x' marks above several notes in both staves.

ais-molli (melodinen)

Two staves of musical notation in treble clef, key signature of three sharps (F#, C#, G#), and 2/4 time signature. The music consists of eighth and sixteenth notes. The first staff has 'S' markings above the eighth and tenth notes. The second staff has 'S' markings above the first and third notes. There are 'x' marks above several notes in both staves.

dis-molli (melodinen)

Two staves of musical notation in treble clef, key signature of three sharps (F#, C#, G#), and 2/4 time signature. The music consists of eighth and sixteenth notes. The first staff has 'S' markings above the first, third, fifth, seventh, and ninth notes. The second staff has 'S' markings above the first and third notes. There are 'x' marks above several notes in both staves.

gis-molli (melodinen)

Two staves of musical notation in treble clef, key signature of three sharps (F#, C#, G#), and 2/4 time signature. The music consists of eighth and sixteenth notes. The first staff has 'S' markings above the first, third, and fifth notes. The second staff has 'S' markings above the first and third notes. There are 'x' marks above several notes in both staves.

# VÄHENNETYT ASTEIKOT JA SOINNUT

## B-oktatoninen asteikko ja -vähennetty sointu

Two staves of musical notation in treble clef. The first staff shows the B-octatonic scale (B, C, D, E, F, G, A, B) with a key signature of one flat (B-flat). The second staff shows the diminished chord (B, C, D, E, F, G, A, B) with a key signature of one flat (B-flat).

## H-oktatoninen asteikko ja -vähennetty sointu

Two staves of musical notation in treble clef. The first staff shows the H-octatonic scale (B, C, D, E, F, G, A, B) with a key signature of one sharp (F-sharp). The second staff shows the diminished chord (B, C, D, E, F, G, A, B) with a key signature of one sharp (F-sharp). The letter 'S' is written above the notes in the first staff and below the notes in the second staff.

## C-oktatoninen asteikko ja -vähennetty sointu

Two staves of musical notation in treble clef. The first staff shows the C-octatonic scale (B, C, D, E, F, G, A, B) with a key signature of two sharps (F-sharp, C-sharp). The second staff shows the diminished chord (B, C, D, E, F, G, A, B) with a key signature of two sharps (F-sharp, C-sharp). The letter 'S' is written above the notes in the first staff and below the notes in the second staff.