

# **Saksofonin asteikot ja niiden sormitukset**

## **● PERUSTASO 3**

# Asteikot

## PERUSTASO 3

kromaattinen asteikko

Two staves of musical notation for a chromatic scale exercise. The top staff is in treble clef with a key signature of one sharp (F#). The bottom staff is in bass clef with a key signature of one flat (Bb). Both staves contain a sequence of eighth notes ascending and then descending. The notes in the top staff are: C4, C#4, D4, D#4, E4, E#4, F4, F#4, G4, G#4, A4, A#4, B4, C5. The notes in the bottom staff are: B3, Bb3, A3, Ab3, G3, Gb3, F3, Fb3, E3, Eb3, D3, Db3, C3, B2. The letter 'S' is placed above the notes in the top staff and below the notes in the bottom staff, indicating slurs for the ascending and descending passages.

B-duuri

Two staves of musical notation for a B major scale exercise. Both staves are in treble clef with a key signature of two sharps (F# and C#). The top staff contains a sequence of eighth notes ascending and then descending: B4, C5, D5, E5, F#5, G5, A5, B5, A5, G5, F#5, E5, D5, C5, B4. The bottom staff contains a similar sequence: B4, C5, D5, E5, F#5, G5, A5, B5, A5, G5, F#5, E5, D5, C5, B4. The notes are slurred together in both directions.

H-duuri

Two staves of musical notation for a D major scale exercise. Both staves are in treble clef with a key signature of two sharps (F# and C#). The top staff contains a sequence of eighth notes ascending and then descending: D4, E4, F#4, G4, A4, B4, C#5, D5, C#5, B4, A4, G4, F#4, E4, D4. The letter 'S' is placed above the notes in the top staff. The bottom staff contains a similar sequence: D4, E4, F#4, G4, A4, B4, C#5, D5, C#5, B4, A4, G4, F#4, E4, D4. The notes are slurred together in both directions.

C-duuri

Two staves of musical notation for a C major scale exercise. Both staves are in treble clef with a key signature of no sharps or flats. The top staff contains a sequence of eighth notes ascending and then descending: C4, D4, E4, F4, G4, A4, B4, C5, B4, A4, G4, F4, E4, D4, C4. The bottom staff contains a similar sequence: C4, D4, E4, F4, G4, A4, B4, C5, B4, A4, G4, F4, E4, D4, C4. The notes are slurred together in both directions.

Cis-duuri

Musical notation for Cis-duuri scale in treble clef, two staves. The key signature has six sharps (F#, C#, G#, D#, A#, E#). The first staff contains the ascending scale with four 'S' markings above it. The second staff contains the descending scale.

D-duuri

Musical notation for D-duuri scale in treble clef, two staves. The key signature has two sharps (F#, C#). The first staff contains the ascending scale. The second staff contains the descending scale.

Es-duuri

Musical notation for Es-duuri scale in treble clef, two staves. The key signature has three flats (Bb, Eb, Ab). The first staff contains the ascending scale. The second staff contains the descending scale.

E-duuri

Musical notation for E-duuri scale in treble clef, two staves. The key signature has three sharps (F#, C#, G#). The first staff contains the ascending scale. The second staff contains the descending scale.

F-duuri

Musical notation for F-duuri scale in treble clef, two staves. The key signature has one flat (Bb). The first staff contains the ascending scale. The second staff contains the descending scale.

Fis-duuri

Two staves of musical notation for the Fis-duuri scale. The key signature has six sharps (F#, C#, G#, D#, A#, E#). The first staff contains the ascending scale with slurs and 'S' markings above the notes. The second staff contains the descending scale with slurs and 'S' markings above the notes.

G-duuri

Two staves of musical notation for the G-duuri scale. The key signature has one sharp (F#). The first staff contains the ascending scale. The second staff contains the descending scale.

As-duuri

Two staves of musical notation for the As-duuri scale. The key signature has two flats (Bb, Eb). The first staff contains the ascending scale. The second staff contains the descending scale.

A-duuri

Two staves of musical notation for the A-duuri scale. The key signature has three sharps (F#, C#, G#). The first staff contains the ascending scale. The second staff contains the descending scale.

b-molli (melodinen)

Two staves of musical notation for the b-molli (melodinen) scale. The first staff shows the ascending scale with two 'S' markings above the notes. The second staff shows the descending scale.

h-molli (melodinen)

Two staves of musical notation for the h-molli (melodinen) scale. The first staff shows the ascending scale with two 'S' markings above the notes. The second staff shows the descending scale.

c-molli (melodinen)

Two staves of musical notation for the c-molli (melodinen) scale. The first staff shows the ascending scale. The second staff shows the descending scale.

cis-molli (melodinen)

Two staves of musical notation for the cis-molli (melodinen) scale. The first staff shows the ascending scale. The second staff shows the descending scale.

d-molli (melodinen)

Two staves of musical notation for the d-molli (melodinen) scale. The first staff shows the ascending scale. The second staff shows the descending scale.

es-molli (melodinen)

Two staves of musical notation for es-molli (melodinen). The key signature has three flats (B-flat, E-flat, A-flat). The first staff contains a melodic line with several slurs marked with the letter 'S'. The second staff continues the melodic line with similar phrasing.

e-molli (melodinen)

Two staves of musical notation for e-molli (melodinen). The key signature has one flat (B-flat). The first staff contains a melodic line. The second staff continues the melodic line.

f-molli (melodinen)

Two staves of musical notation for f-molli (melodinen). The key signature has two flats (B-flat, E-flat). The first staff contains a melodic line. The second staff continues the melodic line.

fis-molli (melodinen)

Two staves of musical notation for fis-molli (melodinen). The key signature has two sharps (F-sharp, C-sharp). The first staff contains a melodic line with slurs marked with the letter 'S'. The second staff continues the melodic line with slurs marked with the letter 'S'.

g-molli (melodinen)

Two staves of musical notation for g-molli (melodinen). The key signature has two flats (B-flat, E-flat). The first staff contains a melodic line. The second staff continues the melodic line.

as-molli (melodinen)

Two staves of musical notation for the 'as-molli (melodinen)' section. The first staff begins with a treble clef and a key signature of three flats (B-flat, E-flat, A-flat). The melody consists of eighth and sixteenth notes, with three slurs labeled 'S' above the first, second, and third measures. The second staff continues the melody, ending with a double bar line.

a-molli (melodinen)

Two staves of musical notation for the 'a-molli (melodinen)' section. The first staff begins with a treble clef and a key signature of two sharps (F-sharp, C-sharp). The melody consists of eighth and sixteenth notes. The second staff continues the melody, ending with a double bar line.

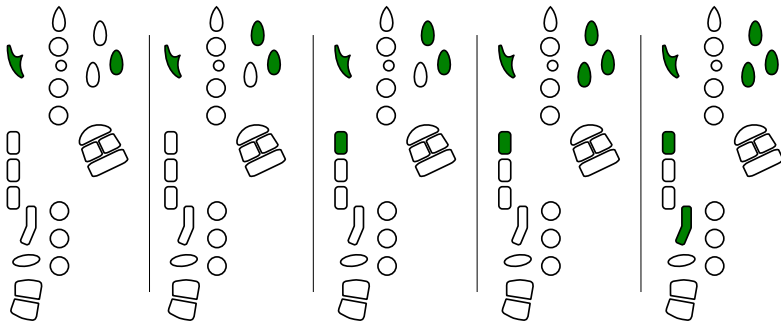
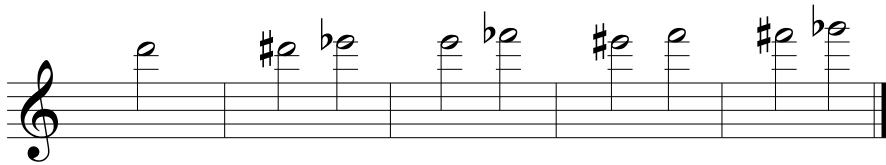
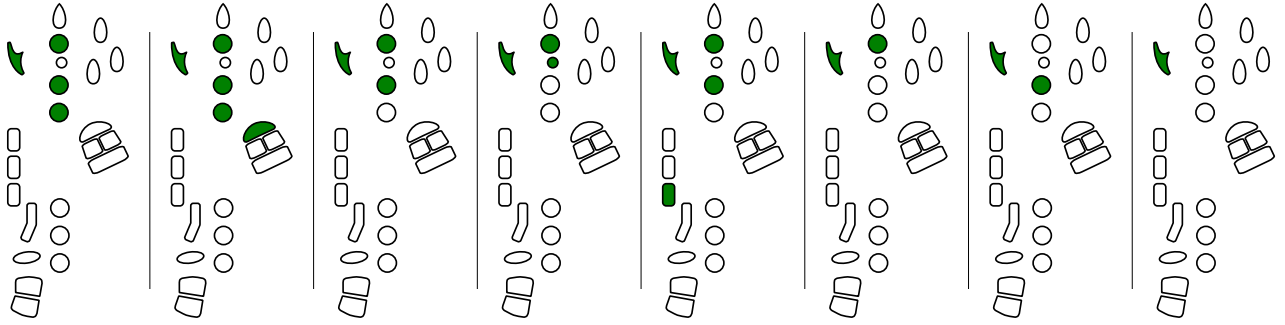
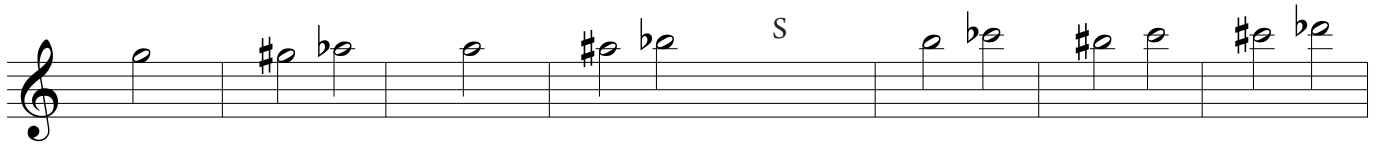
# Sormitukset asteikkoihin

The first system consists of a musical staff with a treble clef and a key signature of one sharp (F#). The notes are: F#4, G4, A4, B4, C5, B4, A4, G4, F#4. Below the staff are eight vertical diagrams, each corresponding to a note. Each diagram shows the hand with fingers numbered 1-5. Green dots indicate the finger to be placed on the key. For example, for F#4, the 1st finger is on F# and the 2nd finger is on G.

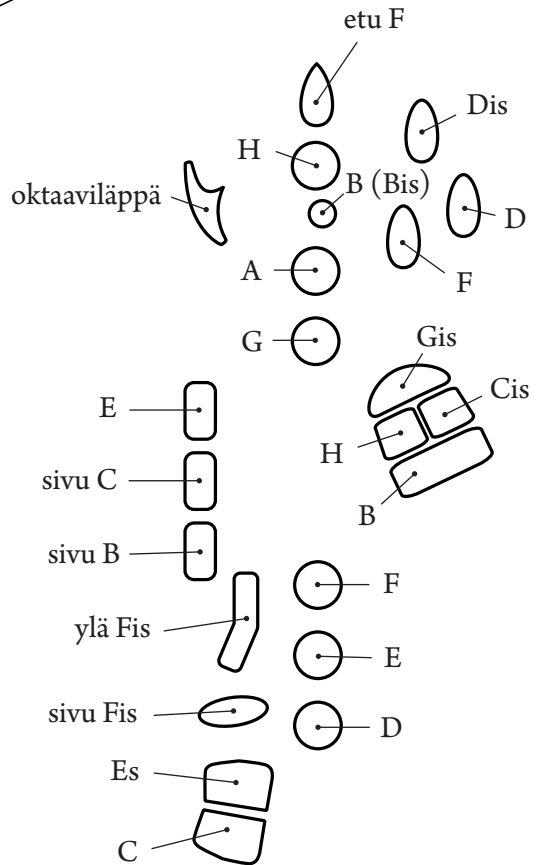
The second system consists of a musical staff with a treble clef and a key signature of one sharp (F#). The notes are: F#4, G4, A4, B4, C5, B4, A4, G4, F#4. The first two notes (F#4 and G4) are marked with an 's' above them. Below the staff are eight vertical diagrams, each corresponding to a note. Each diagram shows the hand with fingers numbered 1-5. Green dots indicate the finger to be placed on the key. For example, for F#4, the 1st finger is on F# and the 2nd finger is on G.

The third system consists of a musical staff with a treble clef and a key signature of one sharp (F#). The notes are: F#4, G4, A4, B4, C5, B4, A4, G4, F#4. The last two notes (A4 and B4) are marked with an 's' above them. Below the staff are eight vertical diagrams, each corresponding to a note. Each diagram shows the hand with fingers numbered 1-5. Green dots indicate the finger to be placed on the key. For example, for F#4, the 1st finger is on F# and the 2nd finger is on G.





S = sivusormitus



A musical staff with a treble clef. It contains eight measures of music. Each measure consists of a single line of notes. The notes are represented by circles and stems, with some notes having flags. The notation is consistent across all measures, suggesting a simple exercise or a specific rhythmic pattern.

A musical staff with a treble clef. It contains eight measures of music. Each measure consists of a single line of notes. The notes are represented by circles and stems, with some notes having flags. The notation is consistent across all measures, suggesting a simple exercise or a specific rhythmic pattern.

A musical staff with a treble clef. It contains eight measures of music. Each measure consists of a single line of notes. The notes are represented by circles and stems, with some notes having flags. The notation is consistent across all measures, suggesting a simple exercise or a specific rhythmic pattern.

A musical staff with a treble clef. It contains eight measures of rhythmic notation. Each measure consists of two horizontal lines. The upper line has a series of notes: a quarter note, followed by a dotted quarter note, and then two eighth notes. The lower line has a series of notes: a quarter note, followed by a dotted quarter note, and then two eighth notes. The notes are represented by simple shapes: a vertical line with a flag for a quarter note, a vertical line with a dot for a dotted quarter note, and a vertical line with a flag for an eighth note.

A musical staff with a treble clef. It contains eight measures of rhythmic notation. Each measure consists of two horizontal lines. The upper line has a series of notes: a quarter note, followed by a dotted quarter note, and then two eighth notes. The lower line has a series of notes: a quarter note, followed by a dotted quarter note, and then two eighth notes. The notes are represented by simple shapes: a vertical line with a flag for a quarter note, a vertical line with a dot for a dotted quarter note, and a vertical line with a flag for an eighth note.

A musical staff with a treble clef. It contains eight measures of rhythmic notation. Each measure consists of two horizontal lines. The upper line has a series of notes: a quarter note, followed by a dotted quarter note, and then two eighth notes. The lower line has a series of notes: a quarter note, followed by a dotted quarter note, and then two eighth notes. The notes are represented by simple shapes: a vertical line with a flag for a quarter note, a vertical line with a dot for a dotted quarter note, and a vertical line with a flag for an eighth note.

