

# **Saksofonin asteikot ja niiden sormitukset**

## **● PERUSTASO 3**

# Asteikot

## PERUSTASO 3

kromaattinen asteikko

Two staves of musical notation for a chromatic scale. The top staff is in G major (one sharp) and the bottom staff is in G minor (two flats). Both staves show a chromatic scale from G to G. The notes are marked with 'S' above them, indicating slurs. The top staff starts on G4 and goes up to G5. The bottom staff starts on G4 and goes down to G3.

B-duuri

Two staves of musical notation for the B major scale. The key signature has two sharps (F# and C#). The top staff shows the scale from B4 to B5, and the bottom staff shows the scale from B4 to B3. The notes are marked with 'S' above them, indicating slurs.

H-duuri

Two staves of musical notation for the D major scale. The key signature has two sharps (F# and C#). The top staff shows the scale from D4 to D5, and the bottom staff shows the scale from D4 to D3. The notes are marked with 'S' above them, indicating slurs.

C-duuri

Two staves of musical notation for the C major scale. The key signature has no sharps or flats. The top staff shows the scale from C4 to C5, and the bottom staff shows the scale from C4 to C3. The notes are marked with 'S' above them, indicating slurs.

Cis-duuri

Musical notation for the Cis-duuri scale in treble clef, key of C major. The scale is written across two staves. The first staff contains the ascending scale with slurs and 'S' markings above the notes. The second staff contains the descending scale with slurs and 'S' markings above the notes.

D-duuri

Musical notation for the D-duuri scale in treble clef, key of D major. The scale is written across two staves. The first staff contains the ascending scale. The second staff contains the descending scale.

Es-duuri

Musical notation for the Es-duuri scale in treble clef, key of E major. The scale is written across two staves. The first staff contains the ascending scale. The second staff contains the descending scale.

E-duuri

Musical notation for the E-duuri scale in treble clef, key of E major. The scale is written across two staves. The first staff contains the ascending scale. The second staff contains the descending scale.

F-duuri

Musical notation for the F-duuri scale in treble clef, key of F major. The scale is written across two staves. The first staff contains the ascending scale. The second staff contains the descending scale.

Fis-duuri

Two staves of musical notation for the Fis-duuri scale. The key signature has six sharps (F#, C#, G#, D#, A#, E#). The first staff contains the ascending scale with slurs and 'S' markings above the notes. The second staff contains the descending scale with slurs and 'S' markings above the notes.

G-duuri

Two staves of musical notation for the G-duuri scale. The key signature has one sharp (F#). The first staff contains the ascending scale. The second staff contains the descending scale.

As-duuri

Two staves of musical notation for the As-duuri scale. The key signature has two flats (Bb, Eb). The first staff contains the ascending scale. The second staff contains the descending scale.

A-duuri

Two staves of musical notation for the A-duuri scale. The key signature has three sharps (F#, C#, G#). The first staff contains the ascending scale. The second staff contains the descending scale.

b-molli (harmoninen)

Two staves of musical notation for b-molli (harmoninen). The key signature has two flats (B-flat and E-flat). The notation consists of eighth and sixteenth notes, with slurs and accents. The letter 'S' is placed above the first, second, third, and fourth measures of the first staff.

h-molli (harmoninen)

Two staves of musical notation for h-molli (harmoninen). The key signature has one sharp (F-sharp). The notation consists of eighth and sixteenth notes, with slurs and accents. The letter 'S' is placed above the first, second, third, and fourth measures of the first staff.

c-molli (harmoninen)

Two staves of musical notation for c-molli (harmoninen). The key signature has no sharps or flats. The notation consists of eighth and sixteenth notes, with slurs and accents.

cis-molli (harmoninen)

Two staves of musical notation for cis-molli (harmoninen). The key signature has three sharps (F-sharp, C-sharp, G-sharp). The notation consists of eighth and sixteenth notes, with slurs and accents.

d-molli (harmoninen)

Two staves of musical notation for d-molli (harmoninen). The key signature has one sharp (F-sharp). The notation consists of eighth and sixteenth notes, with slurs and accents.

es-molli (harmoninen)

Two staves of musical notation for the es-molli (harmoninen) scale. The top staff contains the ascending scale with 'S' markings above the notes. The bottom staff contains the descending scale. The key signature has three flats (B-flat, E-flat, A-flat).

e-molli (harmoninen)

Two staves of musical notation for the e-molli (harmoninen) scale. The top staff contains the ascending scale. The bottom staff contains the descending scale. The key signature has two flats (B-flat, E-flat).

f-molli (harmoninen)

Two staves of musical notation for the f-molli (harmoninen) scale. The top staff contains the ascending scale. The bottom staff contains the descending scale. The key signature has one flat (B-flat).

fis-molli (harmoninen)

Two staves of musical notation for the fis-molli (harmoninen) scale. The top staff contains the ascending scale with 'S' markings above the notes. The bottom staff contains the descending scale with an 'S' marking above the final note. The key signature has three sharps (F-sharp, C-sharp, G-sharp).

g-molli (harmoninen)

Two staves of musical notation for the g-molli (harmoninen) scale. The top staff contains the ascending scale. The bottom staff contains the descending scale. The key signature has two sharps (F-sharp, C-sharp).

as-molli (harmoninen)

Two staves of musical notation for the piece 'as-molli (harmoninen)'. The key signature has five flats (B-flat, E-flat, A-flat, D-flat, G-flat). The first staff contains a melodic line with three slurs labeled 'S' above it. The second staff contains a corresponding accompaniment line. The piece concludes with a double bar line.

a-molli (harmoninen)

Two staves of musical notation for the piece 'a-molli (harmoninen)'. The key signature has one sharp (F-sharp). The first staff contains a melodic line with two slurs labeled 'S' above it. The second staff contains a corresponding accompaniment line. The piece concludes with a double bar line.

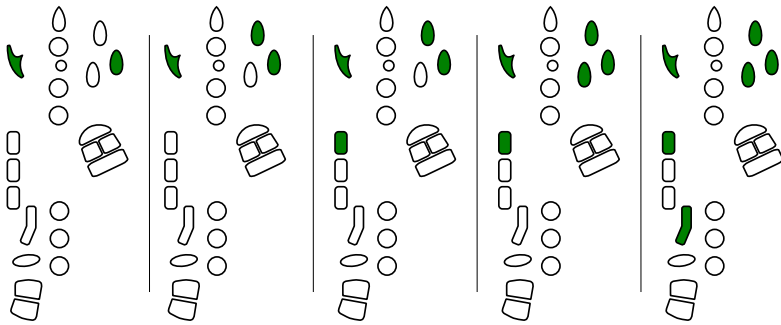
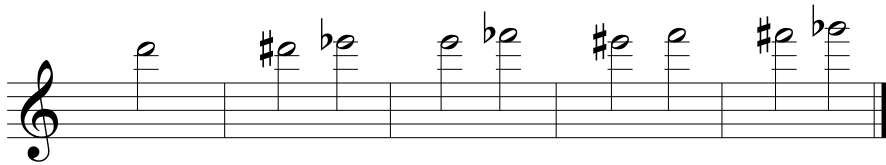
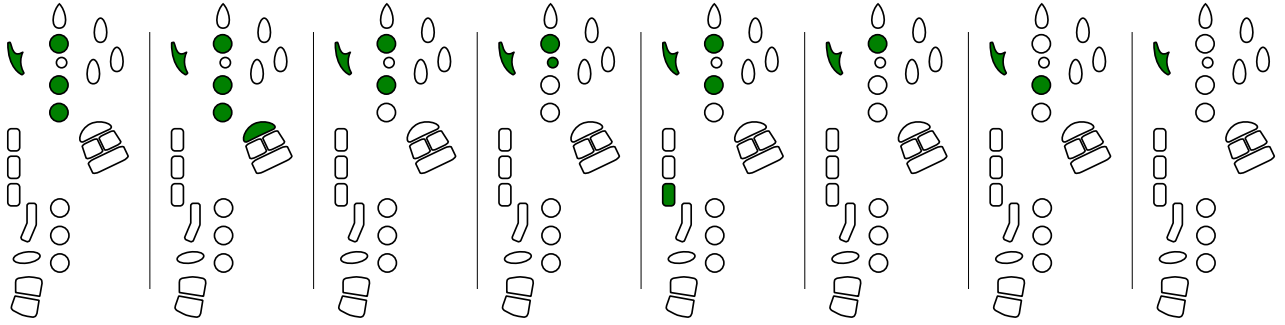
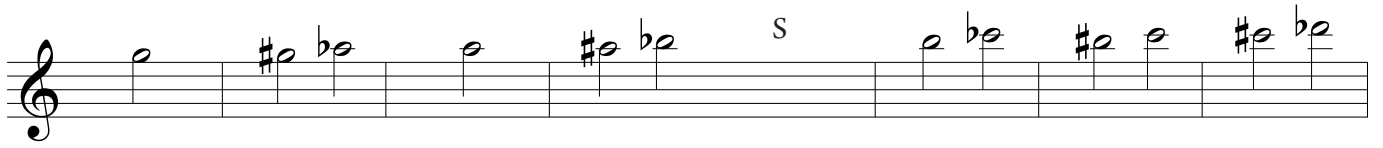
# Sormitukset asteikkoihin

The first system consists of a musical staff with a treble clef and a key signature of one sharp (F#). The notes are: F#4, G4, A4, B4, C5, B4, A4, G4, F#4. Below the staff are eight vertical diagrams, each corresponding to a note. Each diagram shows the hand with fingers numbered 1-5. Green dots indicate the finger to be placed on the key. For example, for F#4, the 1st and 2nd fingers are on the keys.

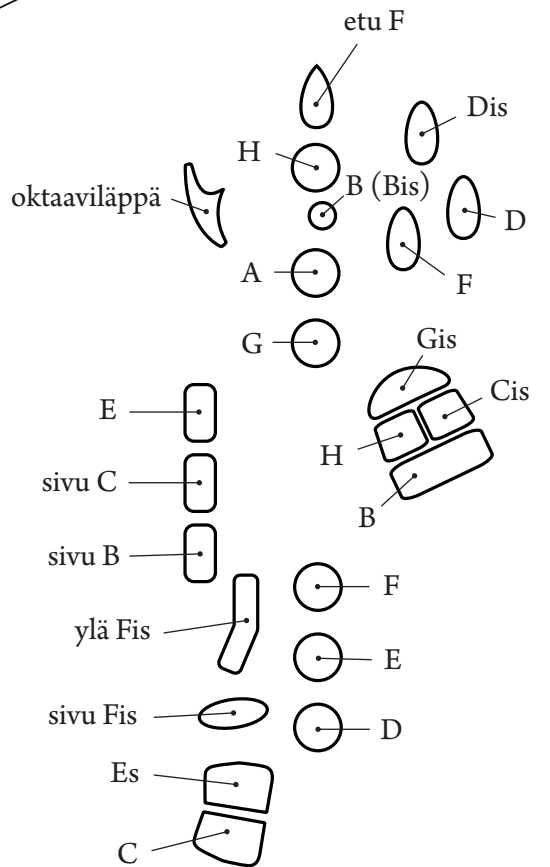
The second system consists of a musical staff with a treble clef and a key signature of one sharp (F#). The notes are: F#4, G4, A4, B4, C5, B4, A4, G4, F#4. The notes are grouped into pairs: (F#4, G4), (A4, B4), (C5, B4), (A4, G4), (F#4, G4). There are 's' markings above the first and fifth measures. Below the staff are eight vertical diagrams showing fingerings for each note. Green dots indicate finger placement.

The third system consists of a musical staff with a treble clef and a key signature of one sharp (F#). The notes are: F#4, G4, A4, B4, C5, B4, A4, G4, F#4. The notes are grouped into pairs: (F#4, G4), (A4, B4), (C5, B4), (A4, G4), (F#4, G4). There is an 's' marking above the eighth measure. Below the staff are eight vertical diagrams showing fingerings for each note. Green dots indicate finger placement.





S = sivusormitus



A musical staff with a treble clef. It contains eight measures of music. Each measure consists of a single line of notes. The notes are represented by circles and stems, with some notes having flags. The notation is consistent across all measures, suggesting a simple exercise or a specific rhythmic pattern.

A musical staff with a treble clef. It contains eight measures of music. Each measure consists of a single line of notes. The notes are represented by circles and stems, with some notes having flags. The notation is consistent across all measures, suggesting a simple exercise or a specific rhythmic pattern.

A musical staff with a treble clef. It contains eight measures of music. Each measure consists of a single line of notes. The notes are represented by circles and stems, with some notes having flags. The notation is consistent across all measures, suggesting a simple exercise or a specific rhythmic pattern.

A musical staff with a treble clef. It contains eight measures of music. Each measure consists of two staves: the upper staff has a treble clef and contains a sequence of notes (circles) and rests, while the lower staff contains a sequence of notes and rests. The notation is consistent across all measures.

A musical staff with a treble clef. It contains eight measures of music. Each measure consists of two staves: the upper staff has a treble clef and contains a sequence of notes (circles) and rests, while the lower staff contains a sequence of notes and rests. The notation is consistent across all measures.

A musical staff with a treble clef. It contains eight measures of music. Each measure consists of two staves: the upper staff has a treble clef and contains a sequence of notes (circles) and rests, while the lower staff contains a sequence of notes and rests. The notation is consistent across all measures.

