

# **Saksofonin asteikot ja niiden sormitukset**

## **● PERUSTASO 2**

# Asteikot

## PERUSTASO 2

### C-duuri

Two staves of musical notation for the C major scale exercise. The first staff contains the ascending scale (C4 to C5) and the second staff contains the descending scale (C5 to C4). The notes are: C4, D4, E4, F4, G4, A4, B4, C5, B4, A4, G4, F4, E4, D4, C4.

### G-duuri

Two staves of musical notation for the G major scale exercise. The first staff contains the ascending scale (G4 to G5) and the second staff contains the descending scale (G5 to G4). The notes are: G4, A4, B4, C5, D5, E5, F#5, G5, F#5, E5, D5, C5, B4, A4, G4.

### F-duuri

Two staves of musical notation for the F major scale exercise. The first staff contains the ascending scale (F4 to F5) and the second staff contains the descending scale (F5 to F4). The notes are: F4, G4, A4, Bb4, C5, D5, E5, F5, E5, D5, C5, Bb4, A4, G4, F4.

### D-duuri

Two staves of musical notation for the D major scale exercise. The first staff contains the ascending scale (D4 to D5) and the second staff contains the descending scale (D5 to D4). The notes are: D4, E4, F#4, G4, A4, B4, C#5, D5, C#5, B4, A4, G4, F#4, E4, D4.

B-duuri

Two staves of musical notation for the B-duuri scale. The first staff shows the ascending scale from B2 to B5, and the second staff shows the descending scale from B5 to B2. The key signature has two flats (B-flat and E-flat).

A-duuri

Two staves of musical notation for the A-duuri scale. The first staff shows the ascending scale from A2 to A5, and the second staff shows the descending scale from A5 to A2. The key signature has three sharps (F#, C#, G#).

Es-duuri

Two staves of musical notation for the Es-duuri scale. The first staff shows the ascending scale from E2 to E5, and the second staff shows the descending scale from E5 to E2. The key signature has two flats (B-flat and E-flat).

E-duuri

Two staves of musical notation for the E-duuri scale. The first staff shows the ascending scale from E2 to E5, and the second staff shows the descending scale from E5 to E2. The key signature has three sharps (F#, C#, G#).

As-duuri

Two staves of musical notation for the As-duuri scale. The first staff shows the ascending scale from A2 to A5, and the second staff shows the descending scale from A5 to A2. The key signature has three flats (B-flat, E-flat, and A-flat).

a-molli (melodinen)

Two staves of musical notation for a-molli (melodinen). The first staff contains a long melodic line with various intervals and accidentals. The second staff contains a shorter melodic line, likely a continuation or a related phrase.

e-molli (melodinen)

Two staves of musical notation for e-molli (melodinen). The first staff contains a long melodic line with various intervals and accidentals. The second staff contains a shorter melodic line, likely a continuation or a related phrase.

d-molli (melodinen)

Two staves of musical notation for d-molli (melodinen). The first staff contains a long melodic line with various intervals and accidentals. The second staff contains a shorter melodic line, likely a continuation or a related phrase.

h-molli (melodinen)

Two staves of musical notation for h-molli (melodinen). The first staff contains a long melodic line with various intervals and accidentals, including two 's' markings above the notes. The second staff contains a shorter melodic line, likely a continuation or a related phrase.

g-molli (melodinen)

Two staves of musical notation for g-molli (melodinen). The first staff contains a long melodic line with various intervals and accidentals. The second staff contains a shorter melodic line, likely a continuation or a related phrase.

**fis-molli (melodinen)**

Two staves of musical notation for the key of F# major. The first staff contains a long melodic line with a 'S' marking above it, indicating a sharp. The second staff contains a shorter melodic line.

**c-molli (melodinen)**

Two staves of musical notation for the key of C minor. The first staff contains a long melodic line. The second staff contains a shorter melodic line.

**cis-molli (melodinen)**

Two staves of musical notation for the key of C# minor. The first staff contains a long melodic line. The second staff contains a shorter melodic line.

**f-molli (melodinen)**

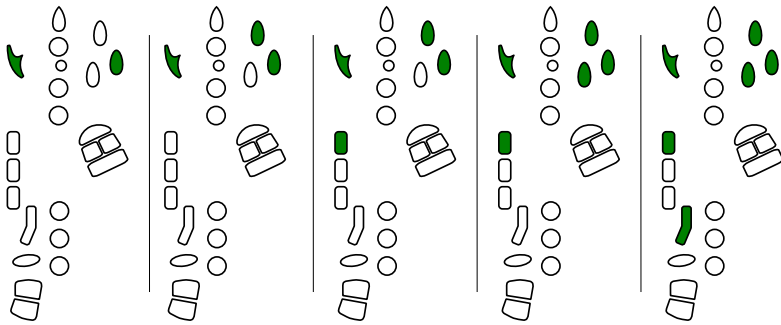
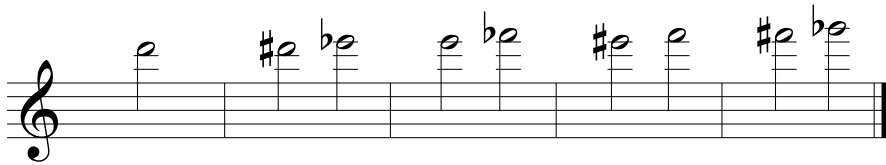
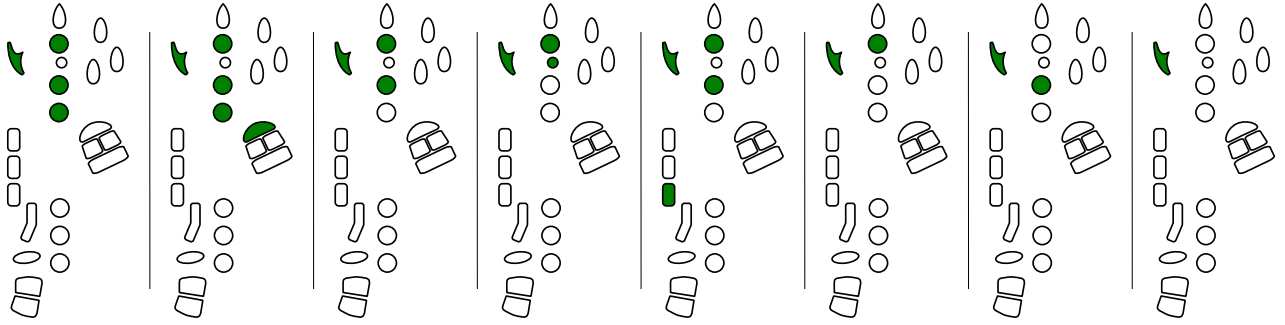
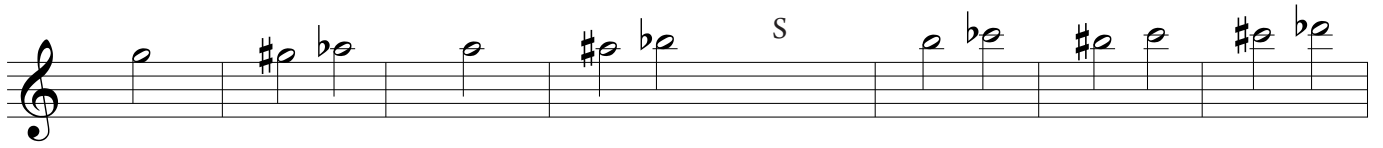
Two staves of musical notation for the key of F minor. The first staff contains a long melodic line. The second staff contains a shorter melodic line.

# Sormitukset asteikkoihin

The first system consists of a musical staff with a treble clef and a key signature of one sharp (F#). The notes are: F#4, G4, A4, B4, C5, B4, A4, G4, F#4. Below the staff are eight vertical diagrams, each corresponding to a note. Each diagram shows the hand with fingers numbered 1-5. Green dots indicate the finger used for each note: 1 for F#, 2 for G, 3 for A, 4 for B, and 5 for C. The diagrams show the hand position and finger placement for each note.

The second system consists of a musical staff with a treble clef and a key signature of one sharp (F#). The notes are: F#4, G4, A4, B4, C5, B4, A4, G4, F#4. Below the staff are eight vertical diagrams, each corresponding to a note. Each diagram shows the hand with fingers numbered 1-5. Green dots indicate the finger used for each note: 1 for F#, 2 for G, 3 for A, 4 for B, and 5 for C. The diagrams show the hand position and finger placement for each note.

The third system consists of a musical staff with a treble clef and a key signature of one sharp (F#). The notes are: F#4, G4, A4, B4, C5, B4, A4, G4, F#4. Below the staff are eight vertical diagrams, each corresponding to a note. Each diagram shows the hand with fingers numbered 1-5. Green dots indicate the finger used for each note: 1 for F#, 2 for G, 3 for A, 4 for B, and 5 for C. The diagrams show the hand position and finger placement for each note.



S = sivusormitus

