

# **Saksofonin asteikot ja niiden sormitukset**

## **● PERUSTASO 2**



B-duuri

Two staves of musical notation for the B-duuri scale. The first staff shows the ascending scale from B2 to B5, and the second staff shows the descending scale from B5 to B2. The key signature has two flats (B-flat and E-flat).

A-duuri

Two staves of musical notation for the A-duuri scale. The first staff shows the ascending scale from A2 to A5, and the second staff shows the descending scale from A5 to A2. The key signature has three sharps (F#, C#, G#).

Es-duuri

Two staves of musical notation for the Es-duuri scale. The first staff shows the ascending scale from E2 to E5, and the second staff shows the descending scale from E5 to E2. The key signature has two flats (B-flat and E-flat).

E-duuri

Two staves of musical notation for the E-duuri scale. The first staff shows the ascending scale from E2 to E5, and the second staff shows the descending scale from E5 to E2. The key signature has three sharps (F#, C#, G#).

As-duuri

Two staves of musical notation for the As-duuri scale. The first staff shows the ascending scale from A2 to A5, and the second staff shows the descending scale from A5 to A2. The key signature has three flats (B-flat, E-flat, and A-flat).

a-molli (harmoninen)

Two staves of musical notation for a-molli (harmoninen). The first staff contains a long melodic line with many slurs and accidentals, and the second staff contains a shorter melodic line.

e-molli (harmoninen)

Two staves of musical notation for e-molli (harmoninen). The first staff contains a long melodic line with many slurs and accidentals, and the second staff contains a shorter melodic line.

d-molli (harmoninen)

Two staves of musical notation for d-molli (harmoninen). The first staff contains a long melodic line with many slurs and accidentals, and the second staff contains a shorter melodic line.

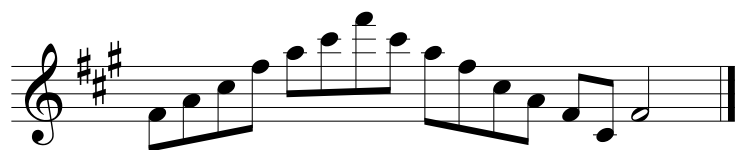
h-molli (harmoninen)

Two staves of musical notation for h-molli (harmoninen). The first staff contains a long melodic line with many slurs and accidentals, and the second staff contains a shorter melodic line. There are four 'S' markings above the first staff.

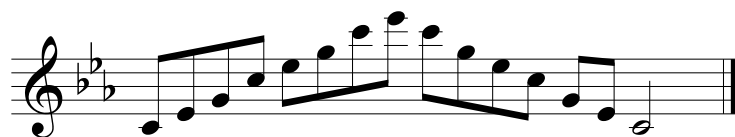
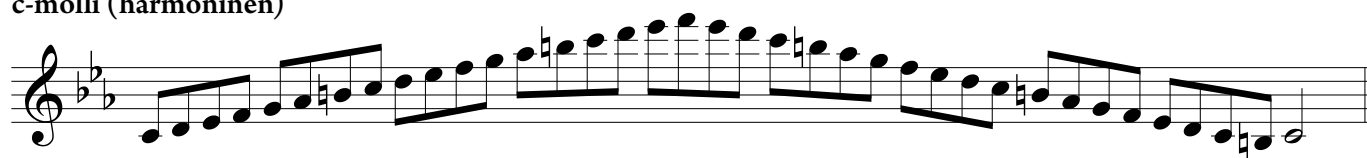
g-molli (harmoninen)

Two staves of musical notation for g-molli (harmoninen). The first staff contains a long melodic line with many slurs and accidentals, and the second staff contains a shorter melodic line.

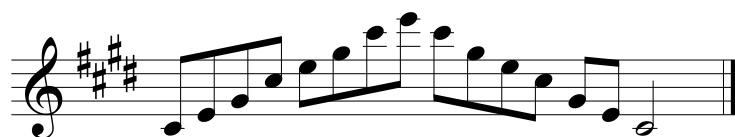
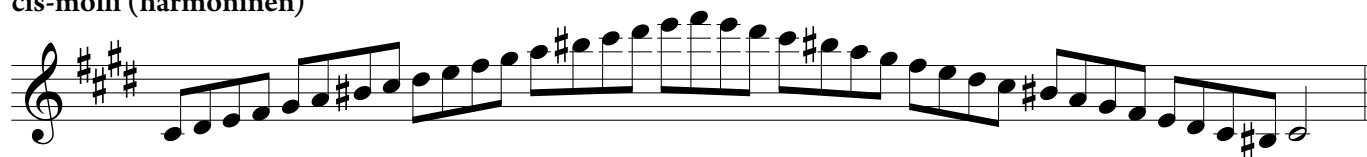
**fis-molli (harmoninen)**



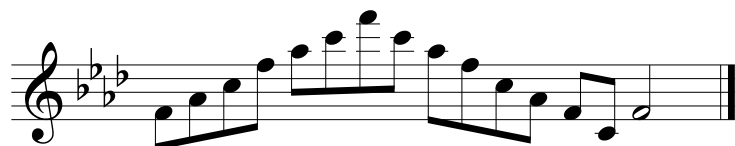
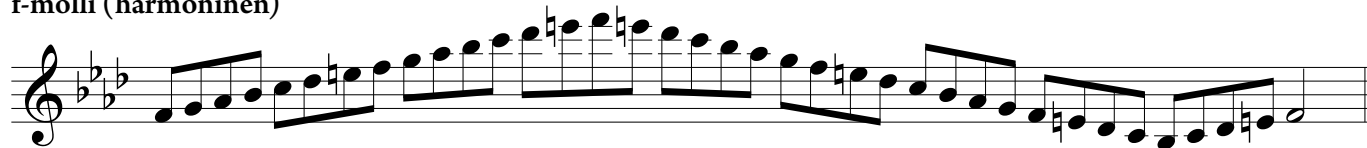
**c-molli (harmoninen)**



**cis-molli (harmoninen)**



**f-molli (harmoninen)**

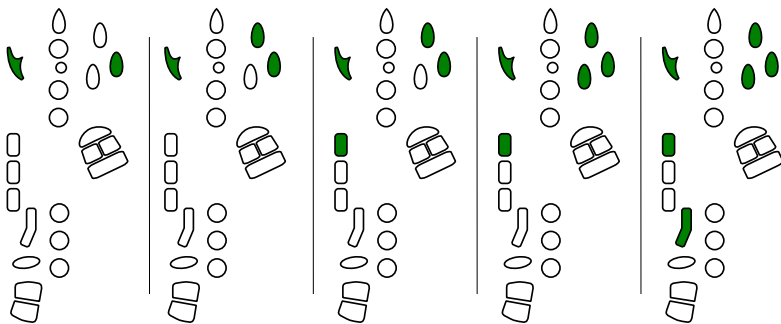
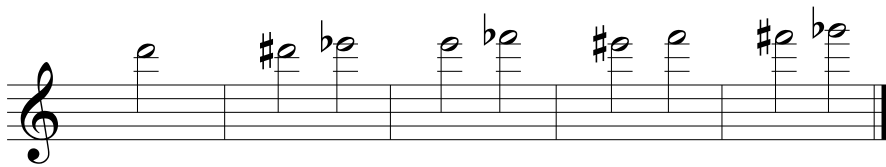
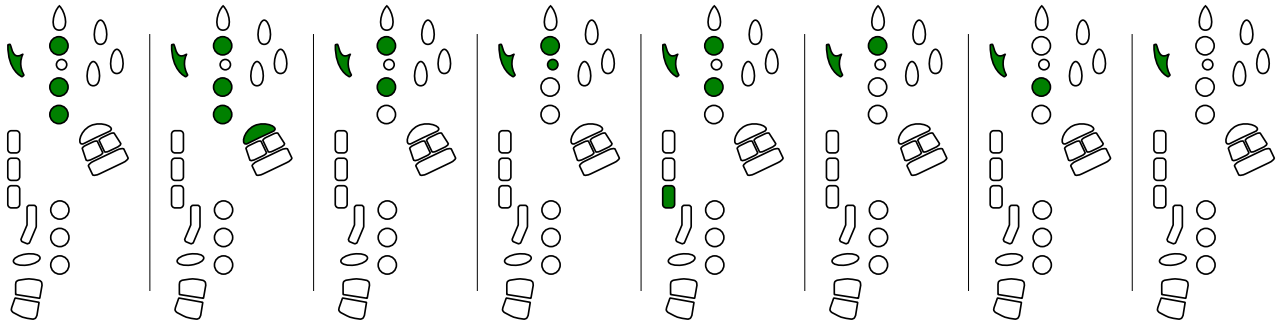


# Sormitukset asteikkoihin

The first system consists of a musical staff with a treble clef and a key signature of one sharp (F#). The notes are: F#4, G4, A4, B4, C5, B4, A4, G4, F#4. Below the staff are eight vertical diagrams, each corresponding to a note. Each diagram shows the hand with fingers numbered 1-5. Green dots indicate the finger to be placed on the key. For example, for F#4, the 2nd finger is on F# and the 1st finger is on G.

The second system consists of a musical staff with a treble clef and a key signature of one sharp (F#). The notes are: F#4, G4, A4, B4, C5, B4, A4, G4, F#4. There are 's' markings above the first and sixth notes. Below the staff are eight vertical diagrams showing fingerings for each note, similar to the first system but with some variations in finger placement.

The third system consists of a musical staff with a treble clef and a key signature of one sharp (F#). The notes are: F#4, G4, A4, B4, C5, B4, A4, G4, F#4. There is an 's' marking above the eighth note. Below the staff are eight vertical diagrams showing fingerings for each note.



S = sivusormitus

