

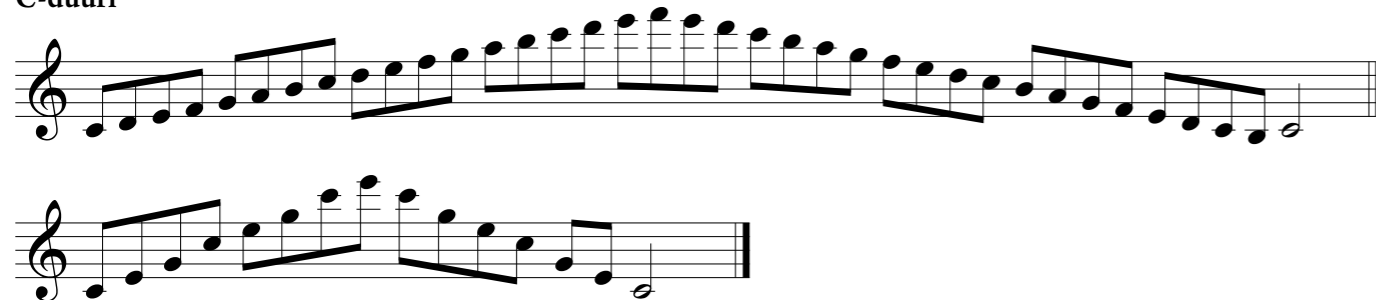
# Saksofonin asteikot ja niiden sormitukset

● PERUSTASO 2

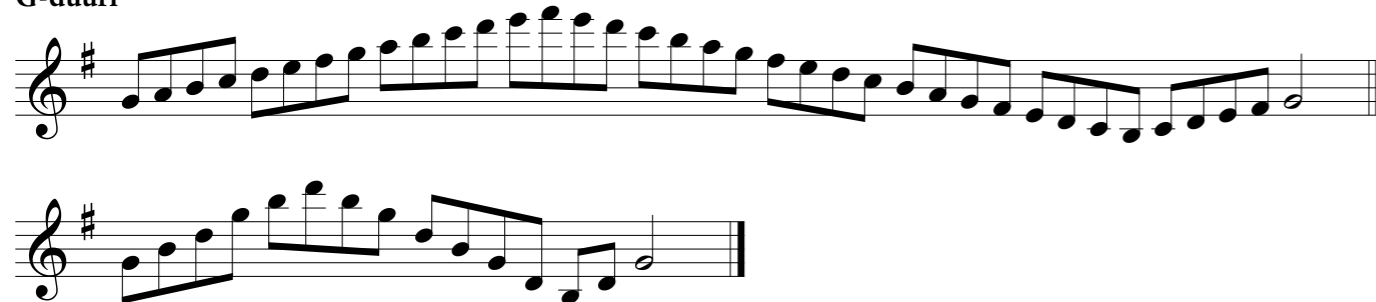
# Asteikot

## PERUSTASO 2

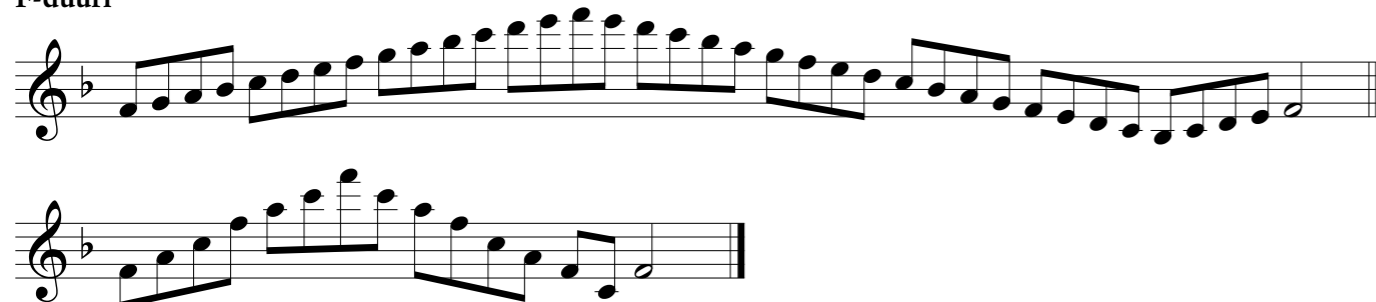
C-duuri



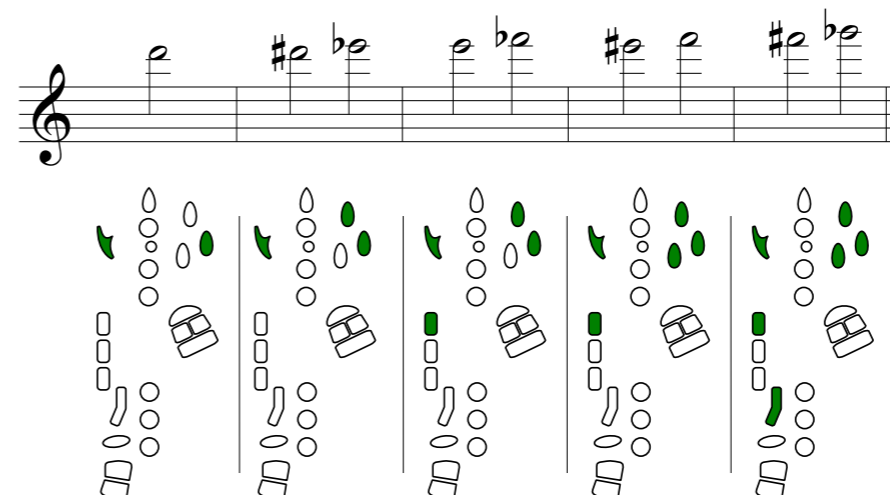
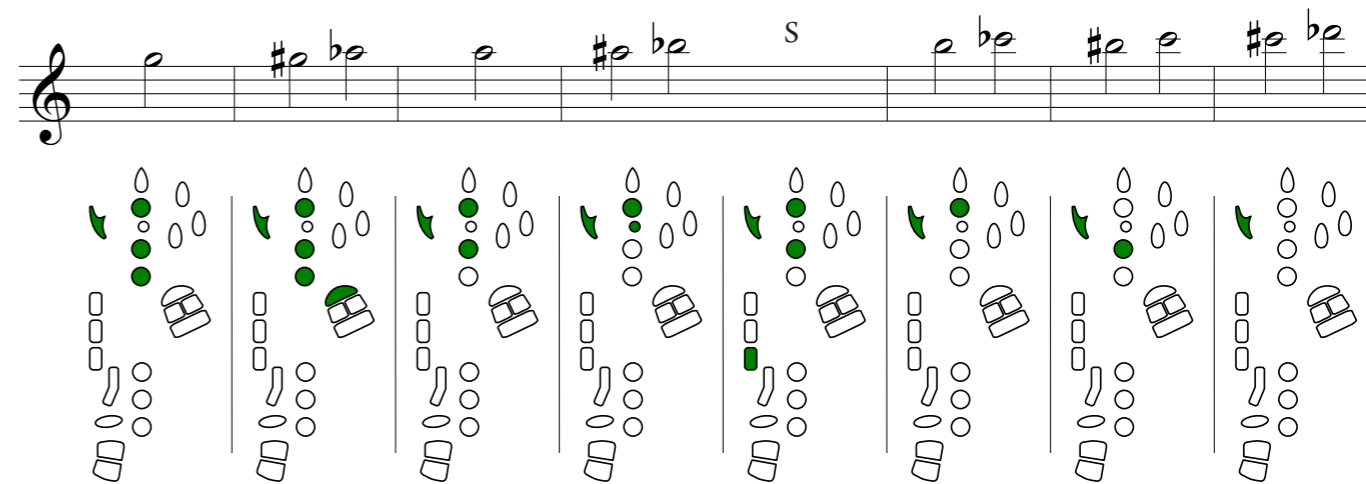
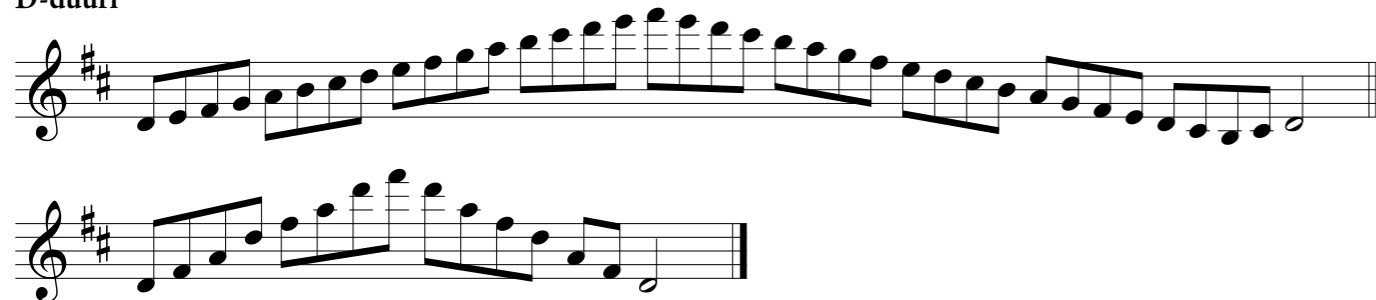
G-duuri



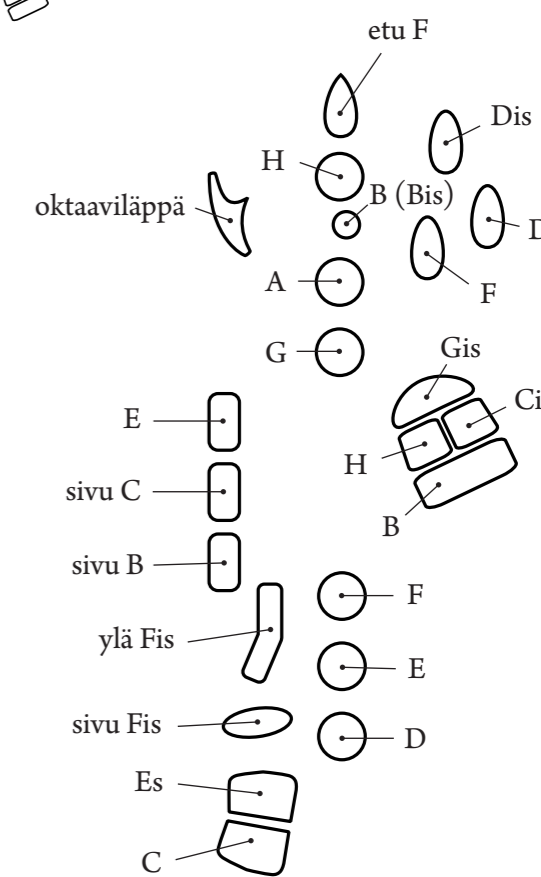
F-duuri



D-duuri



S = sivusormitus



# Sormitukset asteikkoihin

First scale exercise: Treble clef, key signature of one sharp (F#). The scale consists of eight measures. The guitar fretboard diagram shows the fingerings for each note, with green dots indicating the fretted notes and white circles for open strings.

Second scale exercise: Treble clef, key signature of one sharp (F#). The scale consists of eight measures. The guitar fretboard diagram shows the fingerings for each note, with green dots indicating the fretted notes and white circles for open strings. The letter 'S' is placed above the first and sixth measures.

Third scale exercise: Treble clef, key signature of one sharp (F#). The scale consists of eight measures. The guitar fretboard diagram shows the fingerings for each note, with green dots indicating the fretted notes and white circles for open strings. The letter 'S' is placed above the eighth measure.

## B-duuri

B major scale: Treble clef, key signature of two sharps (F# and C#). The scale consists of two lines of two measures each. The guitar fretboard diagram shows the fingerings for each note, with green dots indicating the fretted notes and white circles for open strings.

## A-duuri

A major scale: Treble clef, key signature of three sharps (F#, C#, and G#). The scale consists of two lines of two measures each. The guitar fretboard diagram shows the fingerings for each note, with green dots indicating the fretted notes and white circles for open strings.

## Es-duuri

E major scale: Treble clef, key signature of four sharps (F#, C#, G#, and D#). The scale consists of two lines of two measures each. The guitar fretboard diagram shows the fingerings for each note, with green dots indicating the fretted notes and white circles for open strings.

## E-duuri

E major scale: Treble clef, key signature of four sharps (F#, C#, G#, and D#). The scale consists of two lines of two measures each. The guitar fretboard diagram shows the fingerings for each note, with green dots indicating the fretted notes and white circles for open strings.

## As-duuri

A minor scale: Treble clef, key signature of two flats (Bb and Eb). The scale consists of two lines of two measures each. The guitar fretboard diagram shows the fingerings for each note, with green dots indicating the fretted notes and white circles for open strings.

a-molli (harmoninen)

Two staves of musical notation for a-molli (harmoninen). The top staff contains a melodic line with a series of eighth notes, some marked with a sharp sign (#). The bottom staff contains a supporting bass line with eighth notes.

e-molli (harmoninen)

Two staves of musical notation for e-molli (harmoninen). The top staff contains a melodic line with eighth notes and some notes marked with a sharp sign (#). The bottom staff contains a supporting bass line with eighth notes.

d-molli (harmoninen)

Two staves of musical notation for d-molli (harmoninen). The top staff contains a melodic line with eighth notes and some notes marked with a sharp sign (#). The bottom staff contains a supporting bass line with eighth notes.

h-molli (harmoninen)

Two staves of musical notation for h-molli (harmoninen). The top staff contains a melodic line with eighth notes and some notes marked with a sharp sign (#) and an 's' above them. The bottom staff contains a supporting bass line with eighth notes.

g-molli (harmoninen)

Two staves of musical notation for g-molli (harmoninen). The top staff contains a melodic line with eighth notes and some notes marked with a sharp sign (#). The bottom staff contains a supporting bass line with eighth notes.

fis-molli (harmoninen)

Two staves of musical notation for fis-molli (harmoninen). The top staff contains a melodic line with eighth notes and some notes marked with a sharp sign (#) and an 's' above them. The bottom staff contains a supporting bass line with eighth notes.

c-molli (harmoninen)

Two staves of musical notation for c-molli (harmoninen). The top staff contains a melodic line with eighth notes and some notes marked with a flat sign (b). The bottom staff contains a supporting bass line with eighth notes.

cis-molli (harmoninen)

Two staves of musical notation for cis-molli (harmoninen). The top staff contains a melodic line with eighth notes and some notes marked with a sharp sign (#). The bottom staff contains a supporting bass line with eighth notes.

f-molli (harmoninen)

Two staves of musical notation for f-molli (harmoninen). The top staff contains a melodic line with eighth notes and some notes marked with a flat sign (b). The bottom staff contains a supporting bass line with eighth notes.