

# **Saksofonin asteikot ja niiden sormitukset**

## **● PERUSTASO 1**

# Asteikot

## PERUSTASO 1

### G-duuri

Three staves of musical notation for the G-duuri scale exercise. The first staff shows the scale in two directions: ascending and descending. The second and third staves show more complex rhythmic patterns, including eighth and sixteenth notes, and rests.

### F-duuri

Three staves of musical notation for the F-duuri scale exercise. The first staff shows the scale in two directions: ascending and descending. The second and third staves show more complex rhythmic patterns, including eighth and sixteenth notes, and rests.

### C-duuri

Three staves of musical notation for the C-duuri scale exercise. The first staff shows the scale in two directions: ascending and descending. The second and third staves show more complex rhythmic patterns, including eighth and sixteenth notes, and rests.

D-duuri

Three staves of musical notation for the D-duuri scale in treble clef, key of D major. The first staff shows the scale in a simple stepwise fashion. The second staff shows the scale with a slur over the ascending and descending lines. The third staff shows the scale with a slur over the ascending and descending lines, ending with a double bar line.

B-duuri

Three staves of musical notation for the B-duuri scale in treble clef, key of B minor. The first staff shows the scale in a simple stepwise fashion. The second staff shows the scale with a slur over the ascending and descending lines. The third staff shows the scale with a slur over the ascending and descending lines, ending with a double bar line.

a-molli (melodinen)

Musical notation for a-molli (melodinen) in treble clef. It consists of three staves. The first staff has a key signature of one flat (Bb) and a common time signature. The second and third staves continue the melodic line with various rhythmic values and accidentals.

e-molli (melodinen)

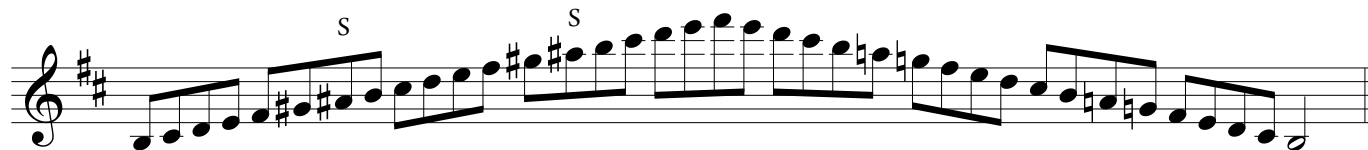
Musical notation for e-molli (melodinen) in treble clef. It consists of three staves. The first staff has a key signature of two flats (Bb, Eb) and a common time signature. The second and third staves continue the melodic line with various rhythmic values and accidentals.

d-molli (melodinen)

Musical notation for d-molli (melodinen) in treble clef. It consists of three staves. The first staff has a key signature of two flats (Bb, Eb) and a common time signature. The second and third staves continue the melodic line with various rhythmic values and accidentals.

S = sivusormitus (katso sormitustaulukko)

**h-molli (melodinen)**



**g-molli (melodinen)**



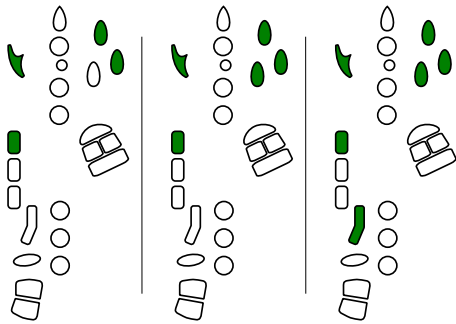
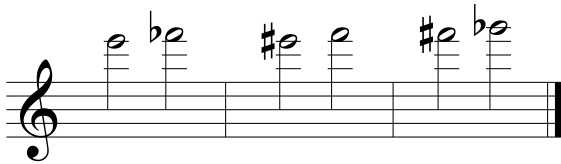
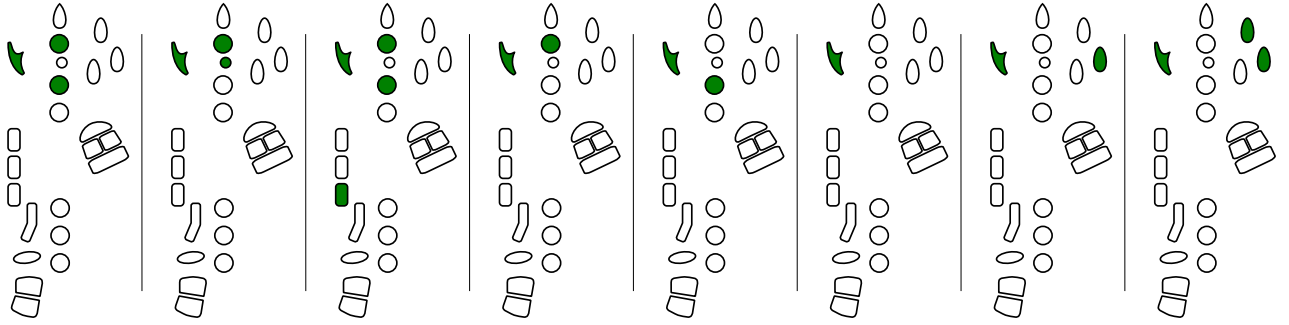
# Sormitukset asteikkoihin

## PERUSTASO 1

First musical staff with treble clef and key signature of one sharp (F#). It contains eight measures of music. Below each measure is a diagram showing the placement of fingers (1-5) on the piano keys. The diagrams use green circles for fingers 1-4 and white circles for finger 5. Some keys are highlighted in green to indicate finger placement.

Second musical staff with treble clef and key signature of one sharp (F#). It contains eight measures of music. A small 's' marking is placed above the fifth measure. Below each measure is a diagram showing the placement of fingers (1-5) on the piano keys. The diagrams use green circles for fingers 1-4 and white circles for finger 5. Some keys are highlighted in green to indicate finger placement.

Third musical staff with treble clef and key signature of one sharp (F#). It contains eight measures of music. Below each measure is a diagram showing the placement of fingers (1-5) on the piano keys. The diagrams use green circles for fingers 1-4 and white circles for finger 5. Some keys are highlighted in green to indicate finger placement.



S = sivusormitus

