

Saksofonin asteikot ja niiden sormitukset

● PERUSTASO 1

Asteikot

PERUSTASO 1

G-duuri

Three staves of musical notation for the G-duuri scale exercise. The first staff shows the scale in a simple, stepwise fashion. The second staff shows the scale with a more complex, flowing line. The third staff shows the scale with a more complex, flowing line, ending with a double bar line.

F-duuri

Three staves of musical notation for the F-duuri scale exercise. The first staff shows the scale in a simple, stepwise fashion. The second staff shows the scale with a more complex, flowing line. The third staff shows the scale with a more complex, flowing line, ending with a double bar line.

C-duuri

Three staves of musical notation for the C-duuri scale exercise. The first staff shows the scale in a simple, stepwise fashion. The second staff shows the scale with a more complex, flowing line. The third staff shows the scale with a more complex, flowing line, ending with a double bar line.

D-duuri

Musical notation for the D-duuri scale in treble clef, key of D major. The notation consists of three staves. The first staff shows the scale in a simple, stepwise fashion. The second staff shows the scale with a more complex, flowing line. The third staff shows the scale with a more complex, flowing line, ending with a double bar line.

B-duuri

Musical notation for the B-duuri scale in treble clef, key of B minor. The notation consists of three staves. The first staff shows the scale in a simple, stepwise fashion. The second staff shows the scale with a more complex, flowing line. The third staff shows the scale with a more complex, flowing line, ending with a double bar line.

a-molli (harmoninen)

Three staves of musical notation for a-molli (harmoninen). The first staff shows a sequence of notes: G4, A4, B4, C5, B4, A4, G4, F#4, E4, D4, C4, B3, A3, G3. The second staff shows a chromatic scale starting from G4, ascending to C5, and then descending back to G3. The third staff shows a descending chromatic scale starting from G4, descending to G3.

e-molli (harmoninen)

Three staves of musical notation for e-molli (harmoninen). The first staff shows a sequence of notes: G4, A4, B4, C5, B4, A4, G4, F#4, E4, D4, C4, B3, A3, G3. The second staff shows a chromatic scale starting from G4, ascending to C5, and then descending back to G3. The third staff shows a descending chromatic scale starting from G4, descending to G3.

d-molli (harmoninen)

Three staves of musical notation for d-molli (harmoninen). The first staff shows a sequence of notes: G4, A4, B4, C5, B4, A4, G4, F#4, E4, D4, C4, B3, A3, G3. The second staff shows a chromatic scale starting from G4, ascending to C5, and then descending back to G3. The third staff shows a descending chromatic scale starting from G4, descending to G3.

S = sivusormitus (katso sormitustaulukko)

h-molli (harmoninen)

Musical notation for h-molli (harmoninen) in treble clef with key signature of two sharps (F# and C#). It consists of three staves. The first staff shows a simple melodic line with two slurs labeled 'S' over the notes G4 and A4. The second staff shows a more complex melodic line with four slurs labeled 'S'. The third staff shows a final melodic phrase.

g-molli (harmoninen)

Musical notation for g-molli (harmoninen) in treble clef with key signature of two flats (Bb and Eb). It consists of three staves. The first staff shows a simple melodic line. The second staff shows a more complex melodic line. The third staff shows a final melodic phrase.

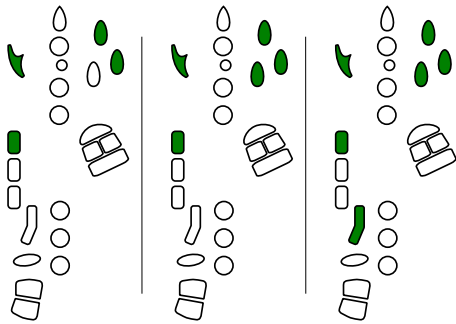
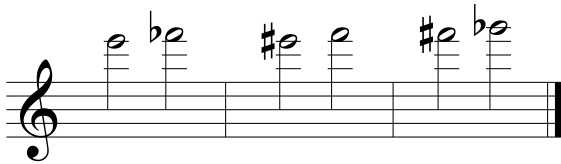
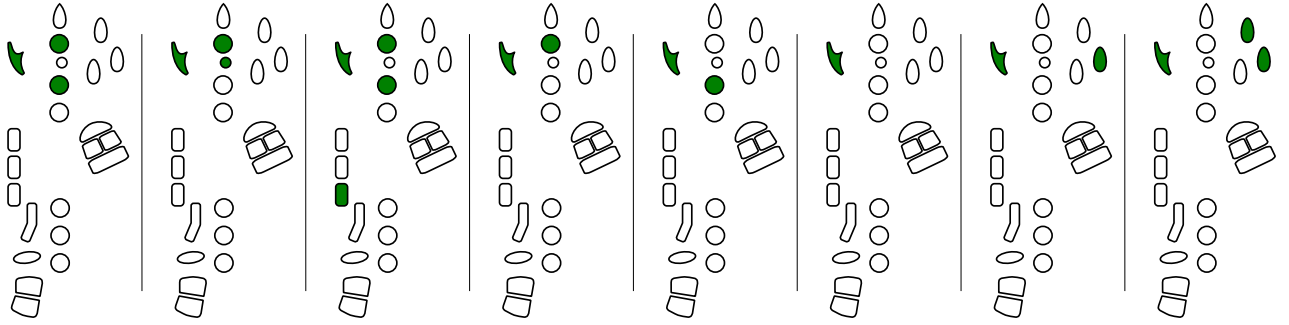
Sormitukset asteikkoihin

PERUSTASO 1

First musical staff with treble clef and key signature of one sharp (F#). It contains eight measures of music. Below each measure is a diagram showing the placement of fingers (1-5) on the piano keys. The diagrams use green circles for fingers 1-4 and white circles for finger 5. Some keys are highlighted in green to indicate finger placement.

Second musical staff with treble clef and key signature of one sharp (F#). It contains eight measures of music. A small 's' marking is placed above the fifth measure. Below each measure is a diagram showing the placement of fingers (1-5) on the piano keys. The diagrams use green circles for fingers 1-4 and white circles for finger 5. Some keys are highlighted in green to indicate finger placement.

Third musical staff with treble clef and key signature of one sharp (F#). It contains eight measures of music. Below each measure is a diagram showing the placement of fingers (1-5) on the piano keys. The diagrams use green circles for fingers 1-4 and white circles for finger 5. Some keys are highlighted in green to indicate finger placement.



S = sivusormitus

