

# **Saksofonin asteikot ja niiden sormitukset**

**D-TASO**

# Asteikot

## D-TASO

### kromaattinen asteikko

Two staves of musical notation for a chromatic scale. The top staff is in D major (one sharp) and the bottom staff is in D minor (two flats). Both staves show a sequence of notes with slurs and 'S' markings above them, indicating a chromatic scale.

### B-kokosävelasteikko

One staff of musical notation for the B major scale (two sharps). The notes are written on a single staff with a treble clef.

### H-kokosävelasteikko

One staff of musical notation for the C major scale (no sharps or flats). The notes are written on a single staff with a treble clef.

### B-duuri

Two staves of musical notation for the B major scale (two sharps). The notes are written on two staves with a treble clef.

### H-duuri

Two staves of musical notation for the C major scale (no sharps or flats). The notes are written on two staves with a treble clef. Slurs and 'S' markings are present above the notes.

C-duuri

Two staves of musical notation for the C major scale. The first staff shows the ascending scale from C4 to C5. The second staff shows the descending scale from C5 to C4. The notes are: C4, D4, E4, F4, G4, A4, B4, C5, B4, A4, G4, F4, E4, D4, C4.

Cis-duuri

Two staves of musical notation for the C# major scale. The first staff shows the ascending scale from C#4 to C#5. The second staff shows the descending scale from C#5 to C#4. The notes are: C#4, D#4, E4, F#4, G#4, A4, B4, C#5, B4, A4, G#4, F#4, E4, D#4, C#4. There are four 'S' markings above the notes on the first staff.

D-duuri

Two staves of musical notation for the D major scale. The first staff shows the ascending scale from D4 to D5. The second staff shows the descending scale from D5 to D4. The notes are: D4, E4, F#4, G#4, A4, B4, C#5, D5, C#5, B4, A4, G#4, F#4, E4, D4.

Es-duuri

Two staves of musical notation for the E major scale. The first staff shows the ascending scale from E4 to E5. The second staff shows the descending scale from E5 to E4. The notes are: E4, F#4, G#4, A4, B4, C#5, D5, E5, D5, C#5, B4, A4, G#4, F#4, E4.

E-duuri

Two staves of musical notation for the E minor scale. The first staff shows the ascending scale from E4 to E5. The second staff shows the descending scale from E5 to E4. The notes are: E4, F4, G4, A4, B4, C5, D5, E5, D5, C5, B4, A4, G4, F4, E4.

F-duuri

Two staves of musical notation for the F major scale. The first staff shows the ascending scale from F4 to F5. The second staff shows the descending scale from F5 to F4. The key signature has one flat (Bb).

Fis-duuri

Two staves of musical notation for the F# major scale. The first staff shows the ascending scale from F#4 to F#5, with 'S' markings above the notes. The second staff shows the descending scale from F#5 to F#4, also with 'S' markings above the notes. The key signature has three sharps (F#, C#, G#).

G-duuri

Two staves of musical notation for the G major scale. The first staff shows the ascending scale from G4 to G5. The second staff shows the descending scale from G5 to G4. The key signature has one sharp (F#).

As-duuri

Two staves of musical notation for the A minor scale. The first staff shows the ascending scale from A4 to A5. The second staff shows the descending scale from A5 to A4. The key signature has three flats (Bb, Eb, Ab).

A-duuri

Two staves of musical notation for the A major scale. The first staff shows the ascending scale from A4 to A5. The second staff shows the descending scale from A5 to A4. The key signature has three sharps (F#, C#, G#).

b-molli (harmoninen)

Two staves of musical notation for the B-flat major scale. The top staff contains the ascending scale with four 'S' markings above it. The bottom staff contains the descending scale. The key signature has two flats (B-flat and E-flat).

h-molli (harmoninen)

Two staves of musical notation for the B major scale. The top staff contains the ascending scale with four 'S' markings above it. The bottom staff contains the descending scale. The key signature has two sharps (F-sharp and C-sharp).

c-molli (harmoninen)

Two staves of musical notation for the C major scale. The top staff contains the ascending scale. The bottom staff contains the descending scale. The key signature has no sharps or flats.

cis-molli (harmoninen)

Two staves of musical notation for the C major scale. The top staff contains the ascending scale. The bottom staff contains the descending scale. The key signature has no sharps or flats.

d-molli (harmoninen)

Two staves of musical notation for the D major scale. The top staff contains the ascending scale. The bottom staff contains the descending scale. The key signature has two sharps (F-sharp and C-sharp).

es-molli (harmoninen)

Two staves of musical notation for the es-molli (harmoninen) scale. The top staff includes slurs labeled 'S' over the first, second, fifth, sixth, and eighth notes. The scale is written in treble clef with a key signature of three flats (B-flat, E-flat, A-flat).

e-molli (harmoninen)

Two staves of musical notation for the e-molli (harmoninen) scale. The scale is written in treble clef with a key signature of one flat (B-flat).

f-molli (harmoninen)

Two staves of musical notation for the f-molli (harmoninen) scale. The scale is written in treble clef with a key signature of two flats (B-flat, E-flat).

fis-molli (harmoninen)

Two staves of musical notation for the fis-molli (harmoninen) scale. The top staff includes slurs labeled 'S' over the second, fifth, sixth, and eighth notes. The scale is written in treble clef with a key signature of three sharps (F-sharp, C-sharp, G-sharp).

g-molli (harmoninen)

Two staves of musical notation for the g-molli (harmoninen) scale. The scale is written in treble clef with a key signature of two sharps (F-sharp, C-sharp).

as-molli (harmoninen)

Two staves of musical notation for the as-molli (harmoninen) section. The top staff features a melodic line with three slurs labeled 'S' above it. The bottom staff provides a harmonic accompaniment. The key signature consists of five flats (B-flat, E-flat, A-flat, D-flat, G-flat).

a-molli (harmoninen)

Two staves of musical notation for the a-molli (harmoninen) section. The top staff features a melodic line with two slurs labeled 'S' above it. The bottom staff provides a harmonic accompaniment. The key signature consists of one flat (F-flat).

b-molli (melodinen)

Two staves of musical notation for the B-flat major scale. The first staff shows the ascending scale with two 'S' markings above the notes. The second staff shows the descending scale.

h-molli (melodinen)

Two staves of musical notation for the B major scale. The first staff shows the ascending scale with two 'S' markings above the notes. The second staff shows the descending scale.

c-molli (melodinen)

Two staves of musical notation for the C major scale. The first staff shows the ascending scale. The second staff shows the descending scale.

cis-molli (melodinen)

Two staves of musical notation for the C# major scale. The first staff shows the ascending scale. The second staff shows the descending scale.

d-molli (melodinen)

Two staves of musical notation for the D major scale. The first staff shows the ascending scale. The second staff shows the descending scale.



es-molli (melodinen)

Two staves of musical notation for the es-molli (melodinen) scale. The top staff contains the ascending scale with six 'S' markings above it. The bottom staff contains the descending scale. The key signature has three flats (B-flat, E-flat, A-flat).

e-molli (melodinen)

Two staves of musical notation for the e-molli (melodinen) scale. The top staff contains the ascending scale. The bottom staff contains the descending scale. The key signature has two flats (B-flat, E-flat).

f-molli (melodinen)

Two staves of musical notation for the f-molli (melodinen) scale. The top staff contains the ascending scale. The bottom staff contains the descending scale. The key signature has one flat (B-flat).

fis-molli (melodinen)

Two staves of musical notation for the fis-molli (melodinen) scale. The top staff contains the ascending scale with 'S' markings above it. The bottom staff contains the descending scale with an 'S' marking above it. The key signature has two sharps (F-sharp, C-sharp).

g-molli (melodinen)

Two staves of musical notation for the g-molli (melodinen) scale. The top staff contains the ascending scale. The bottom staff contains the descending scale. The key signature has one sharp (F-sharp).

as-molli (melodinen)

Two staves of musical notation for the 'as-molli (melodinen)' section. The key signature is three flats (B-flat, E-flat, A-flat). The first staff contains a melodic line with three 'S' markings above it. The second staff continues the melody with a repeat sign at the end.

a-molli (melodinen)

Two staves of musical notation for the 'a-molli (melodinen)' section. The key signature is two sharps (F-sharp, C-sharp). The first staff contains a melodic line. The second staff continues the melody with a repeat sign at the end.

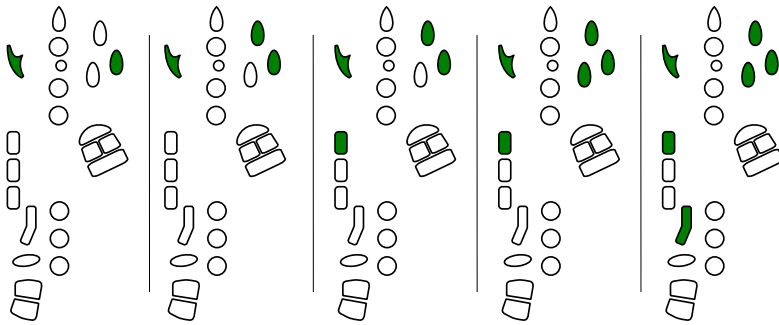
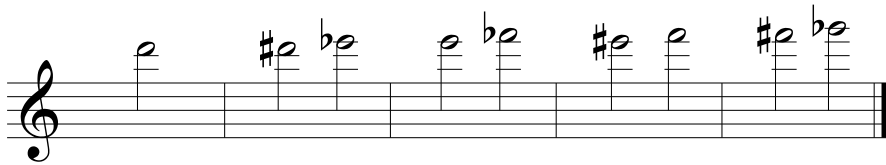
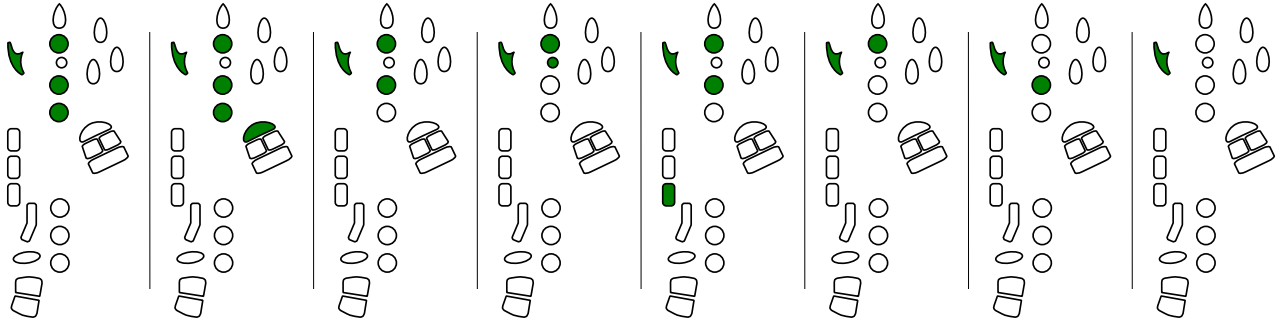
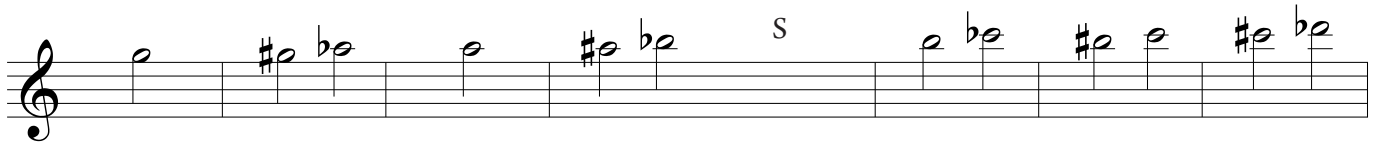


# Sormitukset asteikkoihin

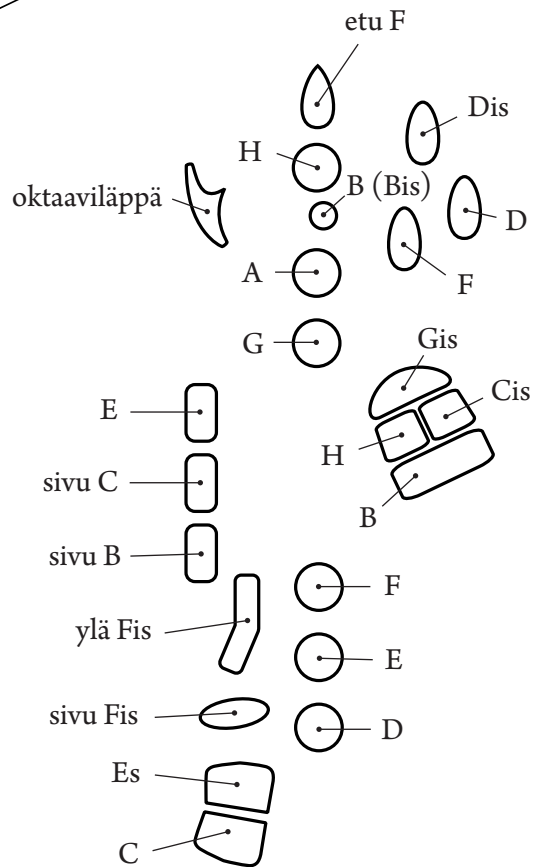
The first system consists of a musical staff with a treble clef and a key signature of one sharp (F#). The notes are: F#4, G4, A4, B4, C5, B4, A4, G4, F#4. Below the staff are eight vertical columns of fingerings. Each column contains three rows of symbols: the top row has circles (some green, some white), the middle row has squares (some green, some white), and the bottom row has rectangles (some green, some white). The fingerings correspond to the notes on the staff above.

The second system consists of a musical staff with a treble clef and a key signature of one sharp (F#). The notes are: F#4, G4, A4, B4, C5, B4, A4, G4. Above the staff, the letter 's' is written above the first and sixth measures. Below the staff are eight vertical columns of fingerings, similar to the first system, with three rows of symbols (circles, squares, rectangles) in green and white.

The third system consists of a musical staff with a treble clef and a key signature of one sharp (F#). The notes are: F#4, G4, A4, B4, C5, B4, A4, G4. Above the staff, the letter 's' is written above the eighth measure. Below the staff are eight vertical columns of fingerings, similar to the first system, with three rows of symbols (circles, squares, rectangles) in green and white.



S = sivusormitus



A musical staff with a treble clef. It contains eight measures of music. Each measure consists of two staves. The upper staff has a treble clef and contains a sequence of notes: a quarter note, followed by a dotted quarter note, and then two eighth notes. The lower staff has a bass clef and contains a sequence of notes: a quarter note, followed by a dotted quarter note, and then two eighth notes. The notes are connected by a slur.

A musical staff with a treble clef. It contains eight measures of music. Each measure consists of two staves. The upper staff has a treble clef and contains a sequence of notes: a quarter note, followed by a dotted quarter note, and then two eighth notes. The lower staff has a bass clef and contains a sequence of notes: a quarter note, followed by a dotted quarter note, and then two eighth notes. The notes are connected by a slur.

A musical staff with a treble clef. It contains eight measures of music. Each measure consists of two staves. The upper staff has a treble clef and contains a sequence of notes: a quarter note, followed by a dotted quarter note, and then two eighth notes. The lower staff has a bass clef and contains a sequence of notes: a quarter note, followed by a dotted quarter note, and then two eighth notes. The notes are connected by a slur.

A musical staff with a treble clef. The notation consists of two horizontal lines. The upper line contains a series of rhythmic marks: a curved line, followed by a group of four circles, then two circles, and finally a group of four circles. The lower line contains a series of rhythmic marks: a curved line, followed by a group of four squares, then two squares, and finally a group of four squares. A vertical bar line is placed after the first group of four circles and the first group of four squares.

A musical staff with a treble clef. The notation consists of two horizontal lines. The upper line contains a series of rhythmic marks: a curved line, followed by a group of four circles, then two circles, and finally a group of four circles. The lower line contains a series of rhythmic marks: a curved line, followed by a group of four squares, then two squares, and finally a group of four squares. A vertical bar line is placed after the first group of four circles and the first group of four squares.

A musical staff with a treble clef. The notation consists of two horizontal lines. The upper line contains a series of rhythmic marks: a curved line, followed by a group of four circles, then two circles, and finally a group of four circles. The lower line contains a series of rhythmic marks: a curved line, followed by a group of four squares, then two squares, and finally a group of four squares. A vertical bar line is placed after the first group of four circles and the first group of four squares.

